

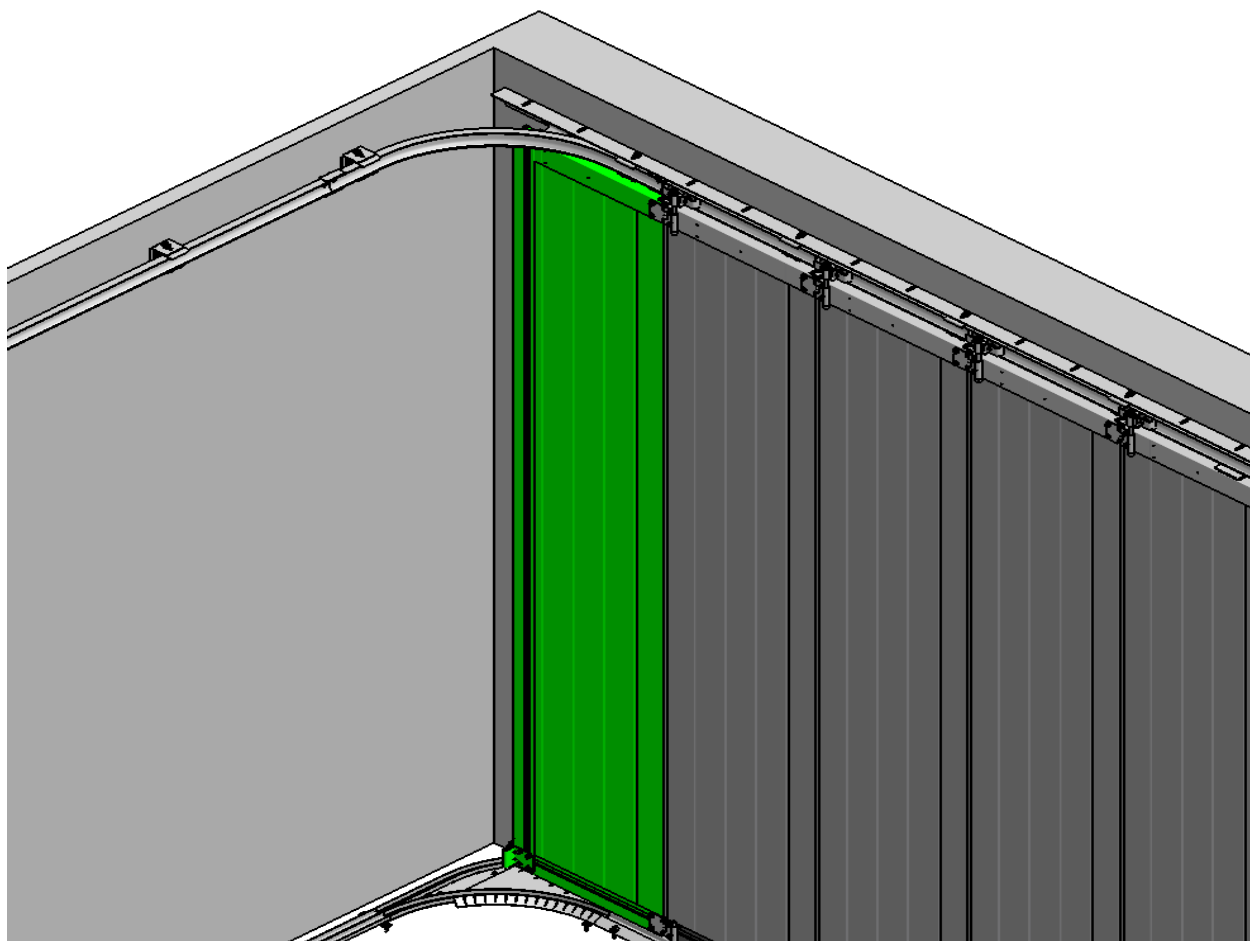
RESL

CE

Hardware system for side sliding sectional garage doors

INSTALLATION / MAINTENANCE / USAGE


© All rights reserved. FlexiForce® 2008





ATTENTION! GENERAL WARNING!

To install, use and maintain this door safely, a number of precautions must be taken. For the safety of all concerned, pay heed to the warnings and instructions given below! If in doubt, contact your supplier.

- ✓ This manual has been written for use by experienced fitters and as such is not suitable for d.i.y. purposes or for use by trainee fitters.
- ✓ This manual describes the installation of the hardware set components, door sections (panels) and refers to installation manuals of the electrical operator. Be sure to supplement this manual if needed with instructions for any additional components not described in this manual.
- ✓ Before starting, read this manual carefully!
- ✓ Certain components may be sharp or have jagged edges. As such you are advised to wear safety gloves.
- ✓ All the components which have been supplied are designed for use with this specific overhead door. Replacement or adding additional components may have an adverse effect on the safety of, and the guarantee on, the door. Also the CE-approval which has been granted to this door will be cancelled when components are changed or installation is not done according to this manual! Installer is responsible for this.
- ✓ Ensure that there is sufficient light during installation. Remove obstacles and dirt. Make sure that there is no one else present other than the fitters. Other people (children!) may get in the way or endanger themselves during the installation.
- ✓ SPECIAL SAFETY WARNINGS OR REMARKS IN THIS MANUAL ARE INDICATED WITH THIS SYMBOL:  READ THESE WARNINGS CAREFULLY.

GUARANTEE, CONDITIONS AND TERMS

The general terms and conditions of delivery and payment issued by the Metaalunie and designated as METAALUNIE CONDITIONS are fully applicable to all our quotations, contracts and their implementation. We expressly reject all other terms and conditions. On request we will send you a copy of these terms and conditions free of charge. A copy may also be downloaded from our website www.flexiforce.com.

FlexiForce strives to deliver 100 % in conformance with the order. In practice, in spite of all our controls, this is not always possible. However we will rectify any errors as quickly as possible, in order to minimise the inconvenience caused to you or the user. As such, it is important that you inform us as soon as possible about any problem with the delivery (include the order number and week of production) and give us the opportunity to offer a suitable solution.

FlexiForce will only reimburse third party costs if we have given explicit permission for this in advance. The reimbursement is based on normal rates and travelling expenses over distances of 1 hour away at most.

For large-scale projects we strongly advise you to first install 1 door completely before installing the other doors. In this way, any errors can be detected early on and rectified comparatively cheaply.

This manual does not confer any rights. Technical modifications may be made without written notice.

FlexiForce has endeavoured to design and put together this hardware set in conformance with the applicable CE-norms. However, we recommend to check our configuration against any local national specification.



FlexiForce has applied the mandated INITIAL TYPE TESTING for doors described in this manual, at the SP-Institute in Sweden (as Notified Body Nr. 0402). The INITIAL TYPE TESTING REPORT that has been rewarded, can be transferred to the door producing company. This is needed to complete your CE files according to product standard EN13241-1. Contact FlexiForce for acquiring this report.

APPLICATION RANGE

FlexiForce has developed a completely new hardware system for side sliding, residential (garage) sectional doors. Designed for all built-in situations depending on the available space. The system includes the following features:

- Suitable for single and double garages, Wmax = 5.000 mm, Hmax = 2.500 mm.
- Max door weight is 165 kg, max. 13kg/ m2 panel)
- Suitable for only 500mm sections, only the closed door section in the curve can be 610mm.
- CE approved when selecting the proper FlexiForce components.

In this handbook we restrict our instructions for the proper assembly of the complete door. For installation of not mentioned products or parts, including any components added by the supplier, as well as for a user handbook, we refer you to the supplier of the complete overhead door who is also responsible for the correct CE marking of the door. These instructions have been prepared for use by experienced professional fitters and are therefore not suitable for the "DIY" fitter or the apprentice fitter.

This door can only be installed according to the CE-certificate if all parts are according to the parts lists of the SP-certificate. See www.flexiforce.com.

We wish you every success with the installation of this hardware set. If anything is unclear or should you have queries, you should of course contact Flexi-Force B.V. or your supplier. This set has to be completed with the assembled door sections. Panels brands and types according to the list of approved panels.



Attention! In this set, the fixing material required to install the track set to the building is not included. It is the responsibility of the qualified door installer to make sure that the building (stone, concrete, wood, etc.) is strong enough at the points of fixation to ensure a reliable construction. The door installer has to select proper fixing materials.

TOOLS REQUIRED FOR CORRECT AND RAPID ASSEMBLY

(Battery) drill with	Bit 4.0 mm
	Bit 6,5 mm
	Plug 10 mm
	Plug 13 mm
Hexagonal key	4 mm
Socket screw spanner	8mm (in)
Ring /open ended spanner	10 mm
Ring /open ended spanner	13 mm
Ring /open ended spanner	15 mm
Ring /open ended spanner	17 mm
Socket wrench	with ¼" square
Wrench	
Gluing clamp	
Cord	
Water level (hose)	
2 blocks of ca. 20 en 40mm in height	
Measuring equipment	

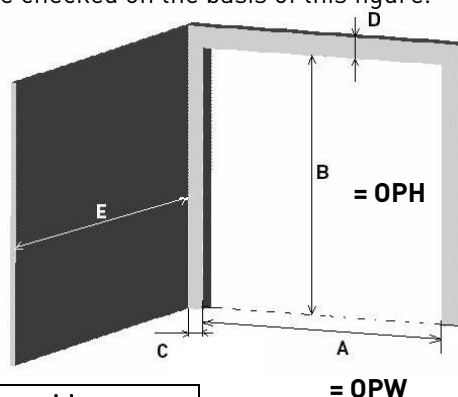
CHECKING DIMENSIONAL DETAILS

Before assembling the system the details below should be checked on the basis of this figure.

- A = Days Opening Width = OPW
- B = Days Opening Height = OPH
- C = Side area
- D = Top area
- E = Side wall free space

OPW max = A max = 5.000mm

OPH max = B max = 2.500mm

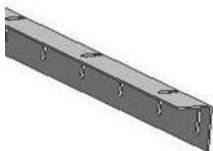



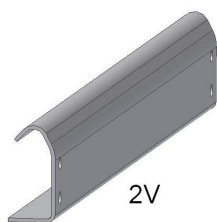
C min	Curve side	Closing side
Option 1 (Liftmaster)	150mm	70mm
Option 2 (Other)	150mm	70mm
Option 3 (Liftmaster on side wall)	200mm	70mm

D min	
Manual operated	100mm
Option 1 (Liftmaster)	142mm
Option 2 (Other)	115mm

E min = A

PARTS LISTS RESL DOOR

	Article code	Explanation function	Qty for door 2,5x2,5m	Qty for door 5 x 2,5m
Upper track + suspension				
	5060L3240	Suspension angle, horizontal, lintel. Together with the RL310 and RL320, this is the suspension of the 2V running track.	1	
	5060L5220			1
	2RL925-400	Upper curve RESL, 2V-J-corner, made out of standard 2V track, bended differently on special new tooling in FF HU.	1	1

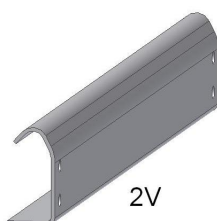


2V

Standard 2V track for upper guidance at the lintel, length is opening width +/- 370mm.

1

1 x 4630mm



2V

Standard 2V track for upper guidance at the wall side, length is opening width +130mm.

1

1 x 5130mm

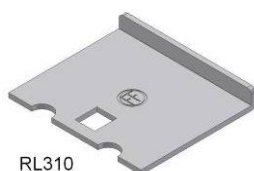


RL300

Angle bracket for track suspension on the wall. In combination with RL310 and RL320.

5

10



RL310

Top bracket, together with RL320 this carries the 2V track.

9

20



RL320

Rail plate, in combination with the RL310, this carries the 2V track.

9

20



RL330

2V-connection bracket, at the point where the upper curve and 2V track connect.

2

2

Upper roller system

1088BN

Socket capscREW, forms the "shaft" which connects the double roller RL592 with the hinge on the panel. M10x140mm.

5

10

DIN912

2050-8

Washer. Steel washer that is placed between the bolt 1068MN and the collar of the RL592.

5

10



2050-8

DIN125A

2052-8

Washer. Nylon washer that is placed between the bolt 1068MN and the collar of the RL592.

5

10



2052-8

DIN433

RL592

Roller system. Double roller combination that runs in the 2V track. Integrated finger protection.

5

+ 1 for
E-power

10

+ 1 for
E-power


RL592

Seals and brushes

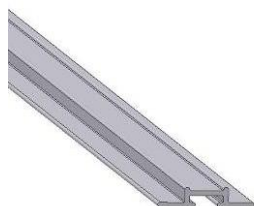


1030L-S6090

Aluminium bottom profile. Used as "end cap" at the bottom side of the door. NB! For fingersafe sections, this profile has to be cut into section height, following more or less the shape of the panel. At this position it also holds the 1038INS2550 and the sealing brush 1087B. Also used at both sides of the door leaf. In 1st panel with seal 1037. In last panel without seal.

2

5
(2pcs
2990
1pcs
5100)



1038INS2550
1038INS3050

Alu profile for holding the brush 1087B. It fits into the 1030L-S profile.

1

2



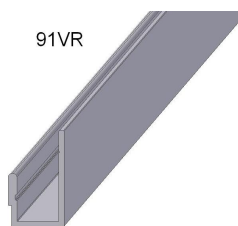
1087B

1087B1

Brush. Forms the seal between panel and steel threshold RLT3000.

3 m

5 m



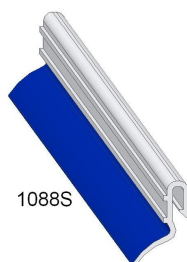
91VR

91VR3015
91VR5000

Alu profile that is used in combination with the new seal 1088S at the sides and lintel part of the door. At the outside of the door this gives a proper appearance (black line around the door).

1

1 pcs
5000
or
2pcs 3015



1088S

1088S-3060

Sealing, that fits on the 91VR alu profile.

3

5

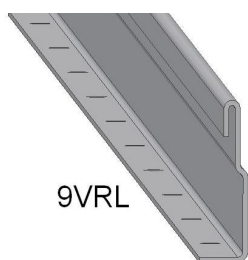


1037

Seal. Standard available FF seal. Fitted at the side of the first panel, into the 1030L-S6090. It seals of the "locking" side of the door, against the 9VRL angle that is fitted on the wall.

2,5 m

2,5 m



9VRL

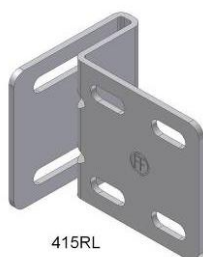
9VRL2525
9VRL3025

Vertical angle. On the closing side of the door, fitted on the wall, together with 2100-15. Is standard 9VR only extra holes.

1

1 pcs

Hinges and brackets on the panels



415RL

415RL

End roller bracket. Holds the 447 slide with RL580 roller. Is fitted on the first panel of the door (so in the corner).

1

1



447RL

Slide 11mm. Roller carrier for RL580. Used on the first panel in combination with 415RL, on the last panel used alone (directly on the panel).

3

3



RL580

Bottom roller. Guides the door through the steel threshold RLT3000.

6

11



423FZ etc.

Hinge. Standard FF hinge range 424FZ, 423FZ can be used. At top and bottom.

8

18



40ES500L/R etc.

Endcap. Standard FF end caps to cover the upper parts of the sections.

4

9



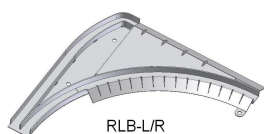
423HZ etc.

Intermediate hinge. Standard FF hinge depending on panel choice.

4

9

Bottom track and curves

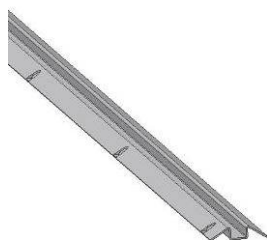


RLB-L/R

Bottom corner. "Low side room" corner. Connects to steel threshold and to 2x RL15U3000 bottom tracks.

1
Left
Or
Right

1
Left
Or
Right

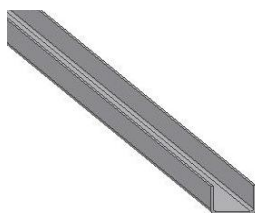


RLT3000

Threshold, steel. Days opening width +/- 250mm. With holes for mounting to the floor. Guides the panel through the days opening.

1

2



RL15U3000

U-profile. To be assembled 2 next to each other, connected with 850RL plates. Length is days opening width. Guides door sections along the side wall.

2

4


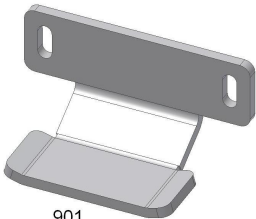
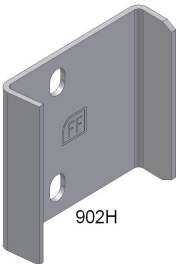




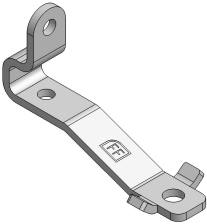



850RL

Rail fixing strip for assembling 2 x RL15U3000 tracks.

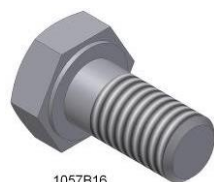
4

8

Locking / anti-burglar products		Qty for door 2,5x2,5m	Qty for door 5 x 2,5m
 <p>650L</p>	650L	option	option
	<p>Lock extension. If you take a standard 650BL-etc. lock, you can add this 650L part with latch and strike. One piece is mounted on the 9VRL angle. The other piece on the panel.</p>		
	 <p>901</p>	2 or 3	2 or 3
	<p>Anti-lift bracket. If the door is mounted, 3 of these brackets ensure that you cannot lift the door out of the bottom track. So, burglar protection. E-operation 3x901 is needed. Manual operation 2x901 and then on the side of the panel 1 x 902H/902WB.</p>		
 <p>902H</p>	902H	1	1
	<p>Anti-lift bracket. If you mount this bracket on the door panel (corner panel), and you fix the 902WB to the wall, when closing the door these "click in" and prevent that the door can be lifted out of the threshold.</p>	Only manual operation	Only manual operation
 <p>902WB</p>	902WB	1	1
	<p>Anti-lift bracket. If you mount this bracket to the wall and fix the 901H on the door panel (corner panel), when closing the door these "click in" and prevent that the door can be lifted out of the threshold.</p>	Only manual operation	Only manual operation

E-operation parts		Qty for door 2,5x2,5m	Qty for door 5 x 2,5m
	RL210 E-bracket	1	1
	RL220 Drive unit bracket	1	1
	RL230 Draw arm	1	1
	557-90Z Roller	1	1
	557BUS8 Bush	2	2

Fixation material and fasteners



1057B16

ISO4017

1057B16

Hex.bolt M8x16

1

1



1057B60

ISO4017

1057B60

Hex.bolt M8x60

1

1



1059B50

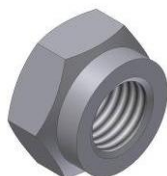
ISO4014

1059B50

Hex.bolt M10x50

1

1



1068MN

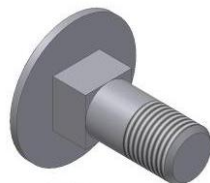
DIN985

1068MN

Nyloc nut M8

6

11



1072B

DIN603

1072B

Mushroom bolt

9

20



1006B

1006B

Pressbolt M6

9

9



1055BV

Screw

60

90



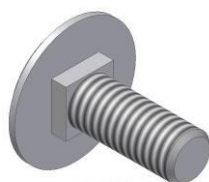
1058F

1058F

Flange nut M10

1

1



1062BF

1062BF

Flat mushroom M6x16

2

2

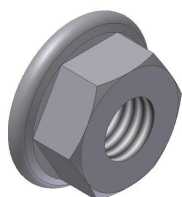


1062M

Flange nut M6

11

11



1068M

1068M

Flange nut M8

13

24



2100-15

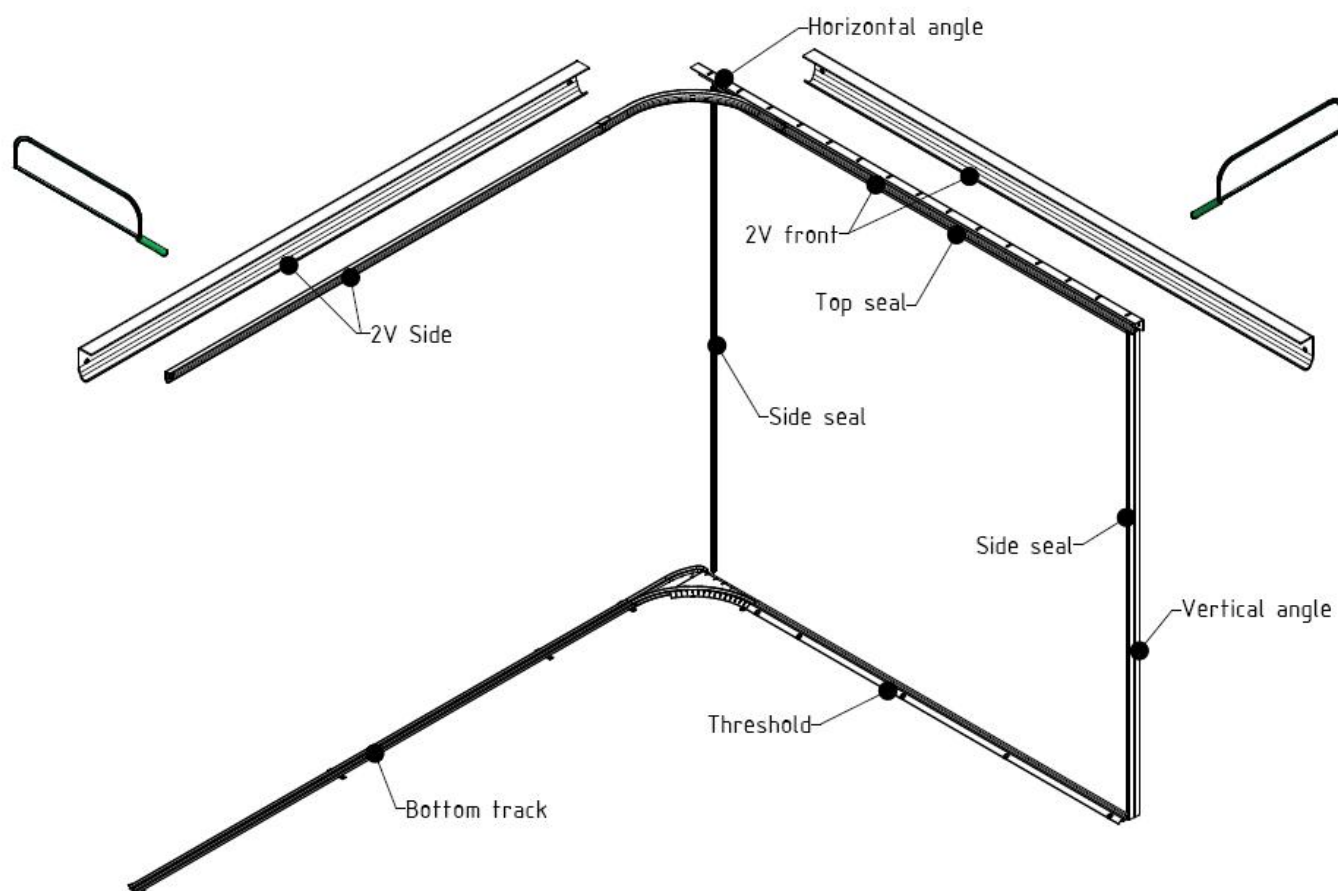
2100-15

Buffer

1



1

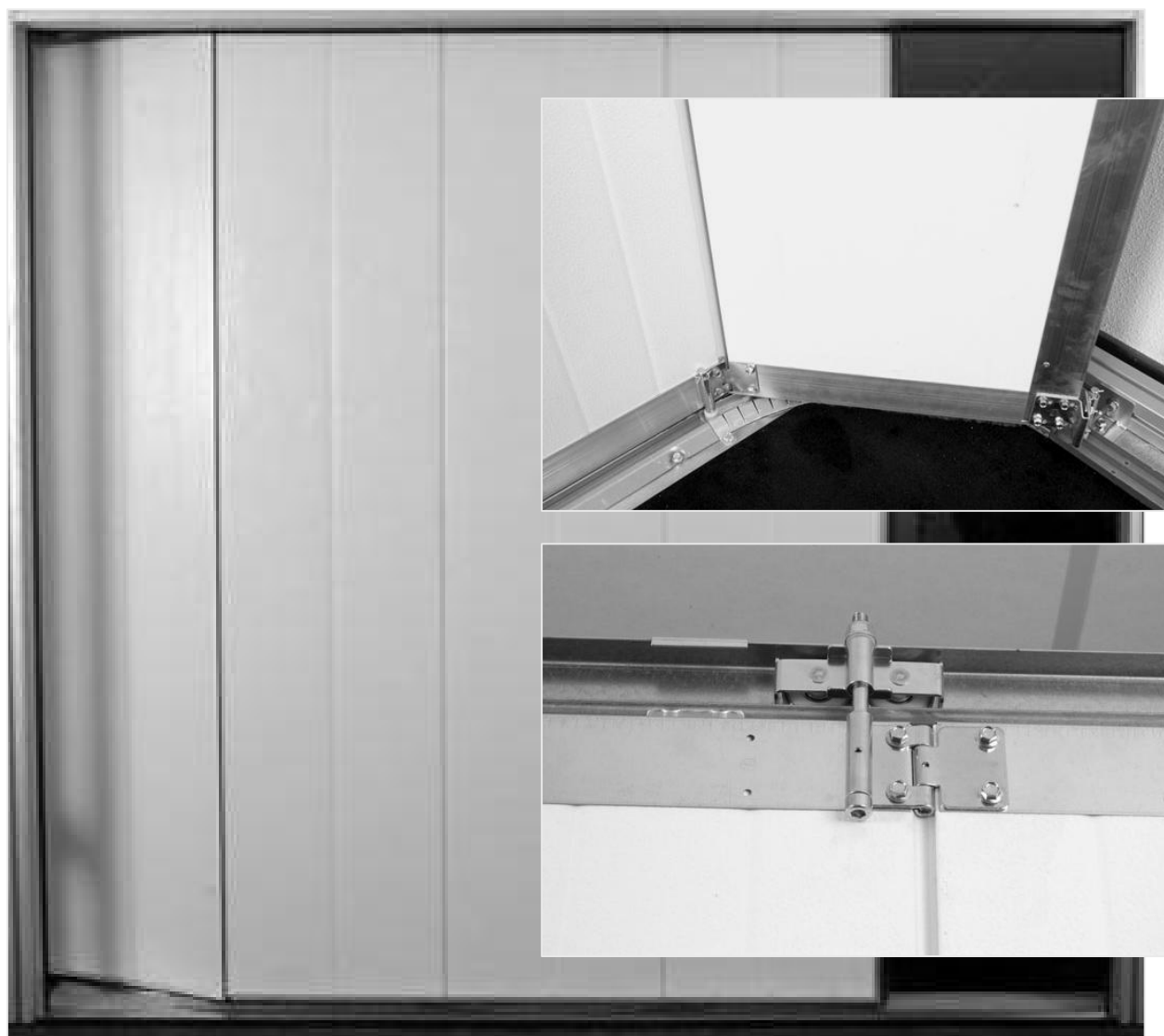
CALCULATION LENGTHS OF PROFILES



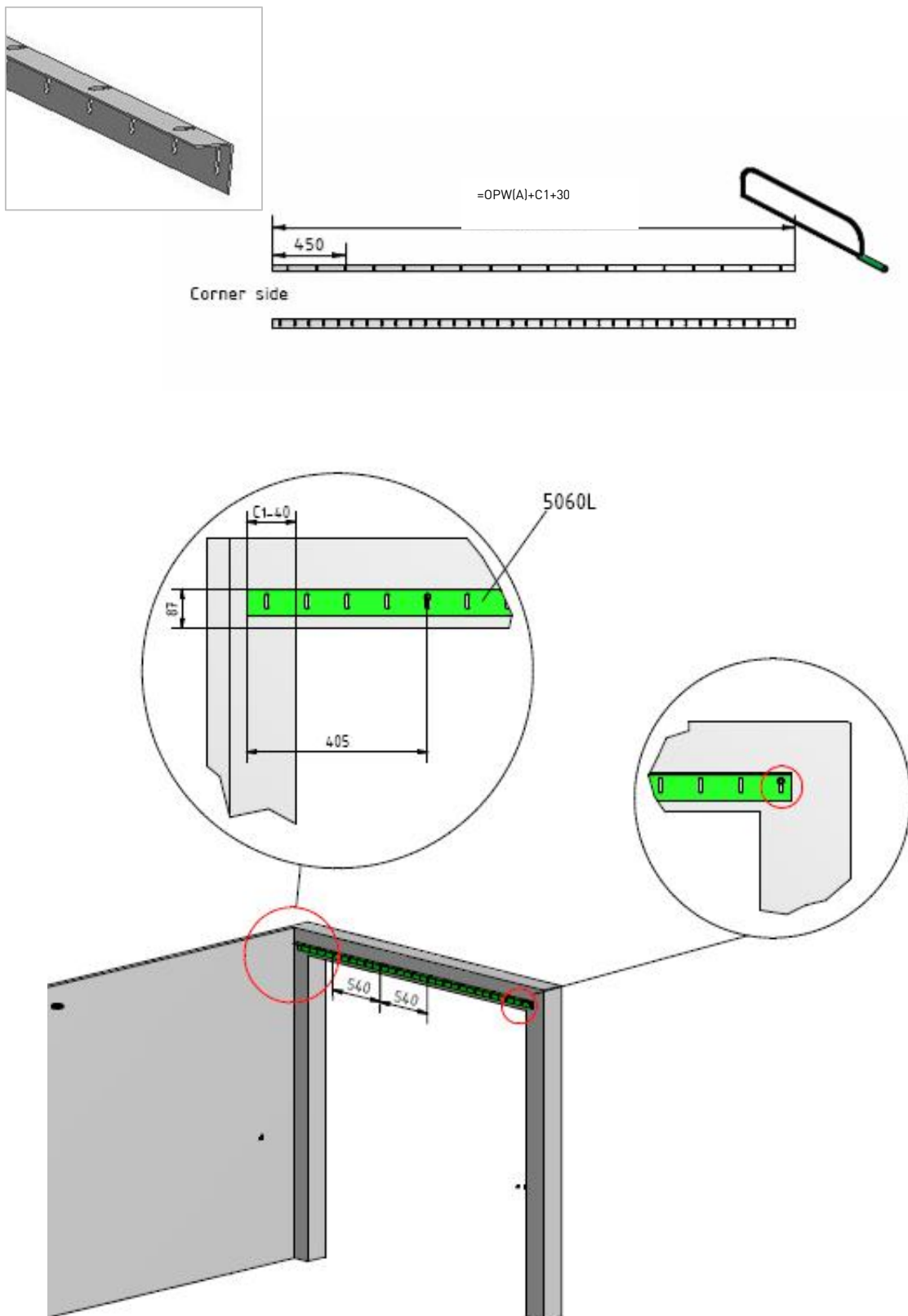
Article number	Description	Formula for length
5060L	L-profile suspension	$OPW(A)+C1+30$
1038INS2550	Brush profile	$OPW(A)+40$
1087B	Brush	$OPW(A)+40$
1088S	Top seal	$OPW(A)$
1088S	Side seal	$OPH(B)+25(2x)$
91VR	Alu profile for top seal	$OPW(A)(1x)$
91VR	Alu profile for side seal	$OPH(B)+25(2x)$
9VRL	Angle	$OPH(B)+25$
2V front	Track lintel	$OPW(A) + C1 - 520$
2V side	Track wall	$OPW(A)+C1 - 20$
RL15U3000	U-profile	$OPW(A)-C1+150(2x)$
RLT3000	Threshold	$OPW(A)+C1-400$
1030L-S	Vertical alu profile on panel	$OPH(B)-17(2x)$
1030L-S	Bottom profile (panel)	$OPW(A)+100(1x)$
1037	Side seal (on panel)	$OPH(B)-15$
C1 is built-in size curve side		

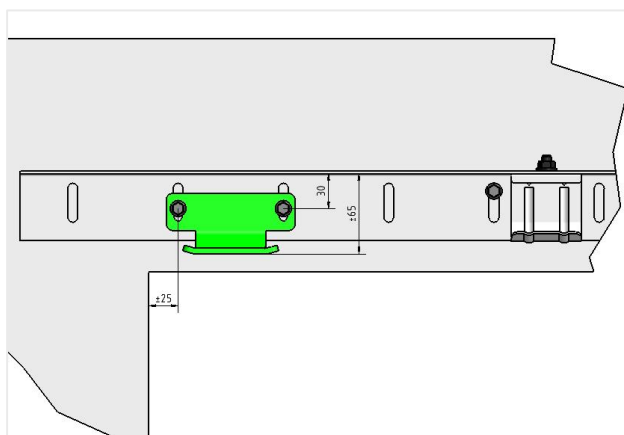
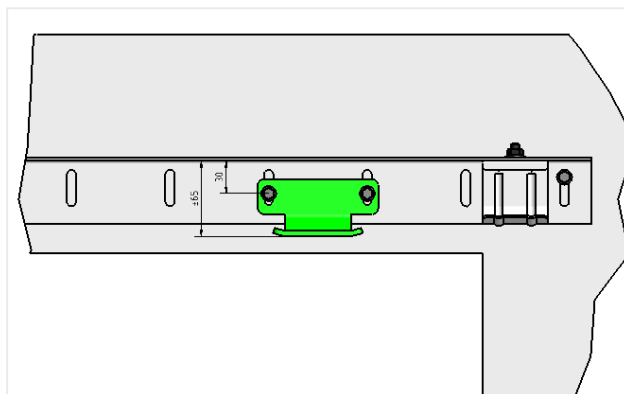
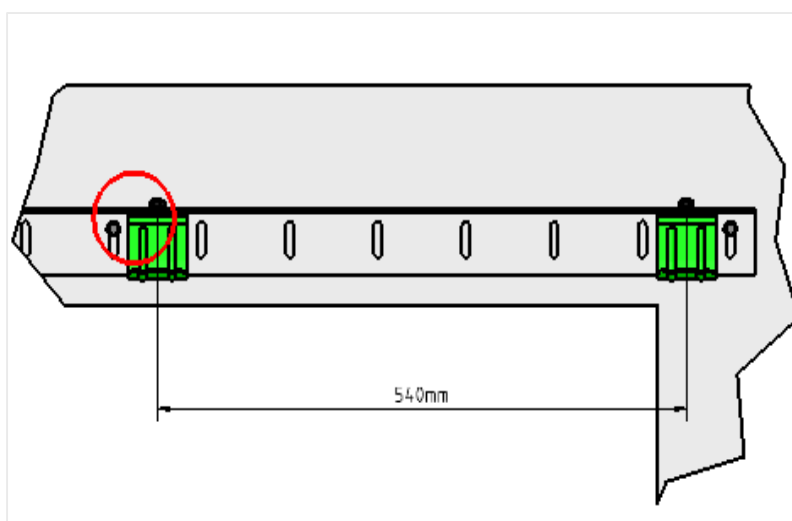
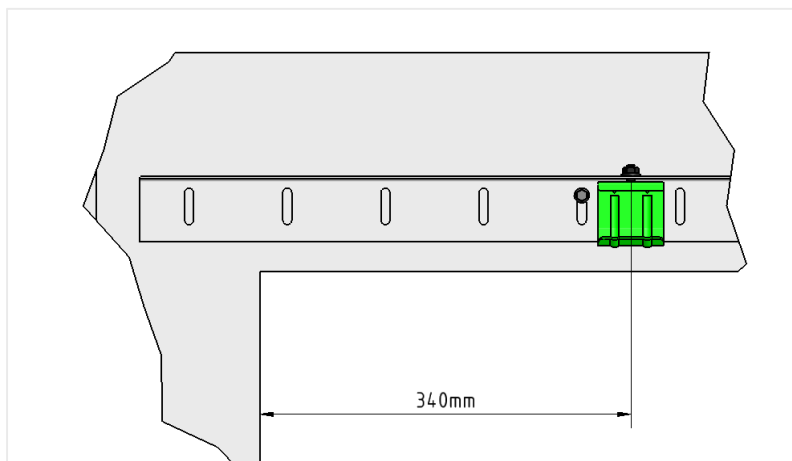
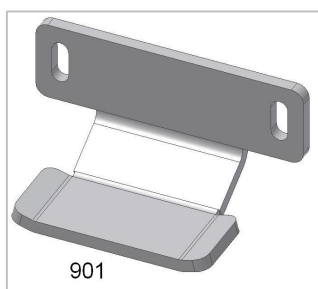
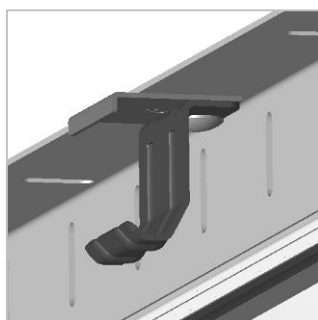
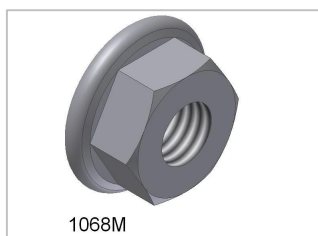
MAX TORQUE FIXATION MATERIALS

	Max Torque (Nm)		Max Torque (Nm)
			
2V in RL320 etc		RL210 to panel	
1072B	23,1	1055BV	10
1068B	23,1	447RL, 423FZ-etc., 415RL to panel	
2V to 2RL925-400		1055BV	10
1006B	9,1	447RL to 415RL	
1062M	9,1	1062BF	9,1
RL220 to RL592		1062M	9,1
1059B50	46,2	2100-15 in 2V	
1058F	46,2	1006B	5,3
RL555 to RL210		1062M	5,3
1057B60	23,1		
1068M	23,1		

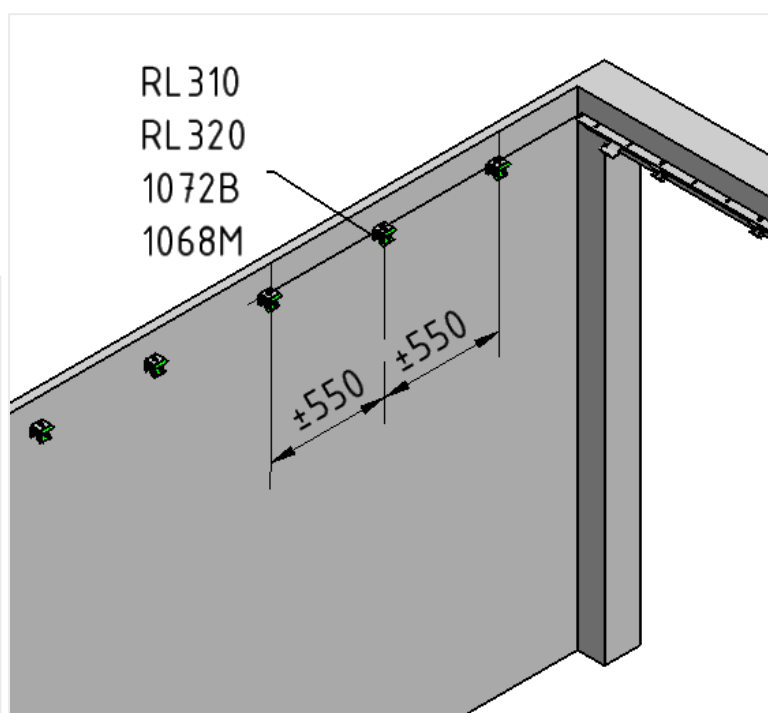
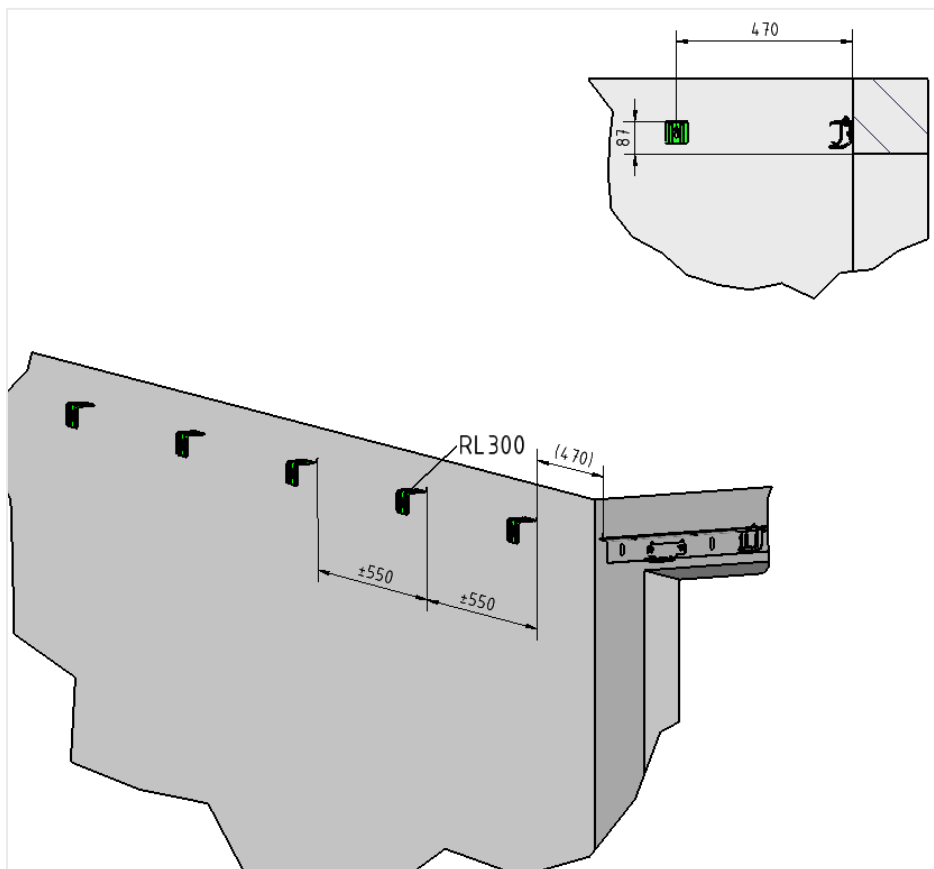
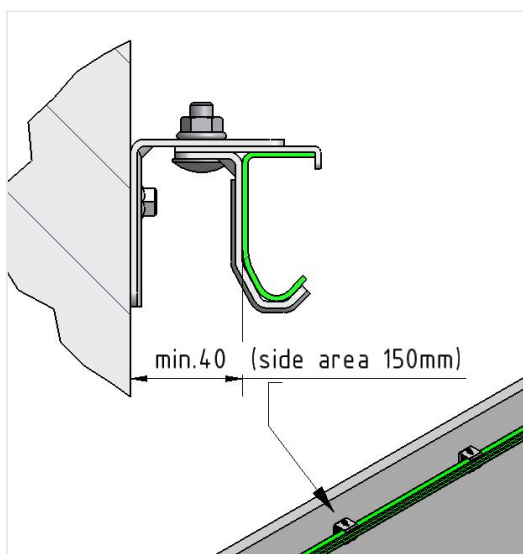


INSTALLATION 5060L ON LINTEL

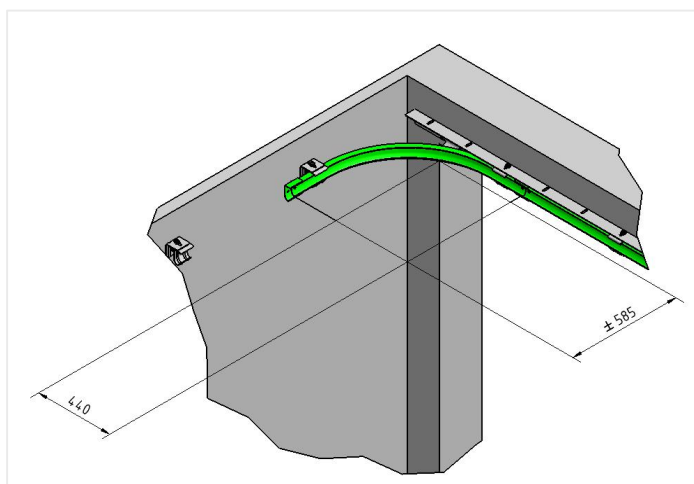
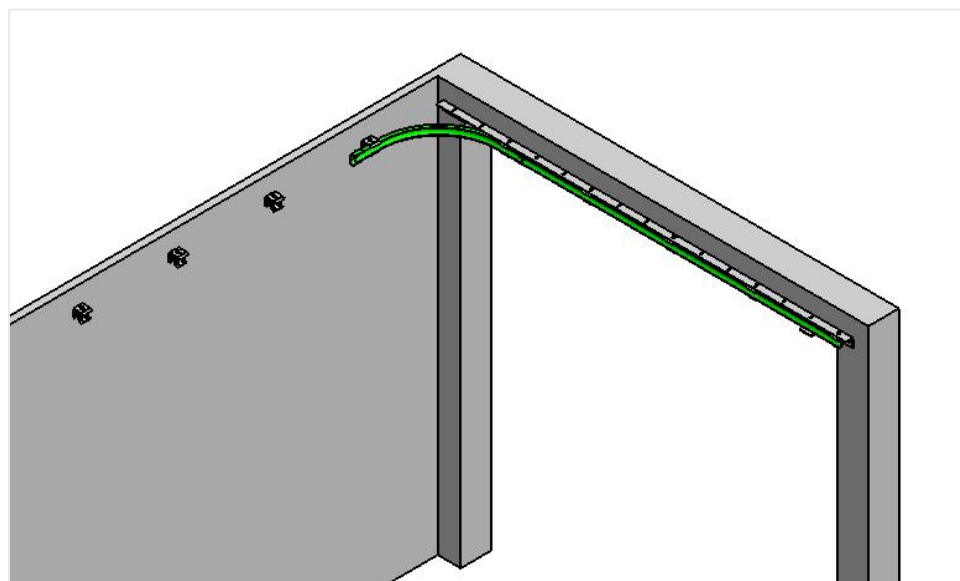
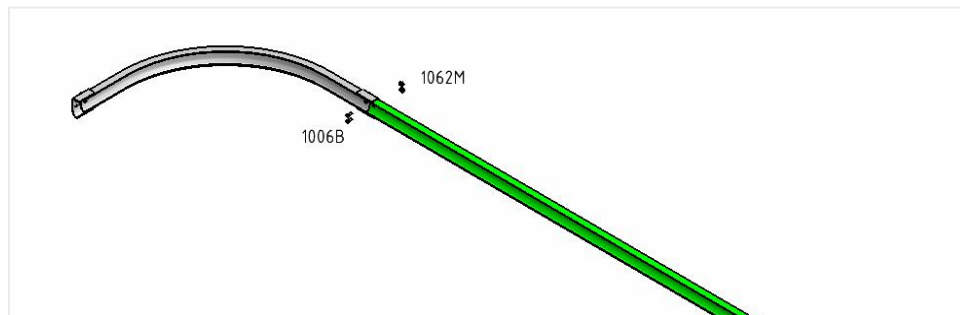


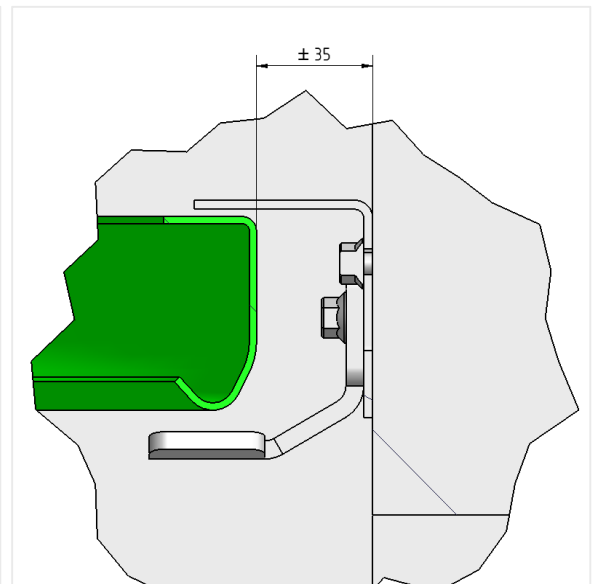
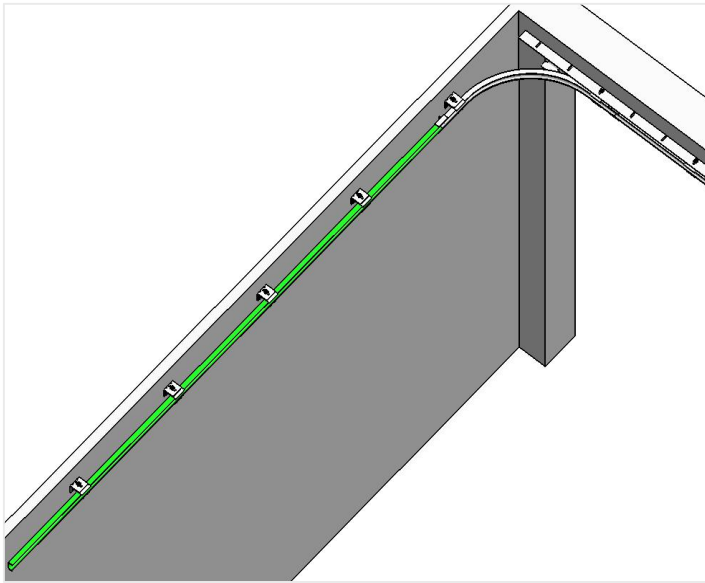


INSTALLATION SUSPENSION SIDE WALL

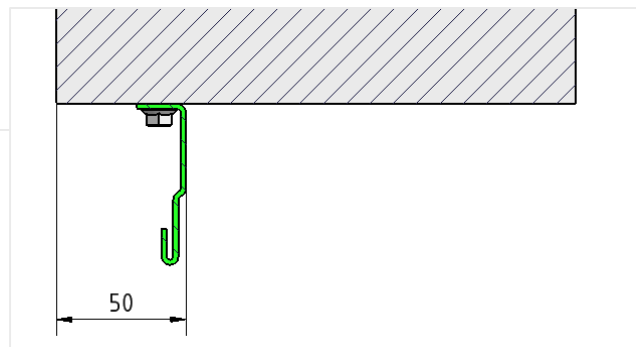
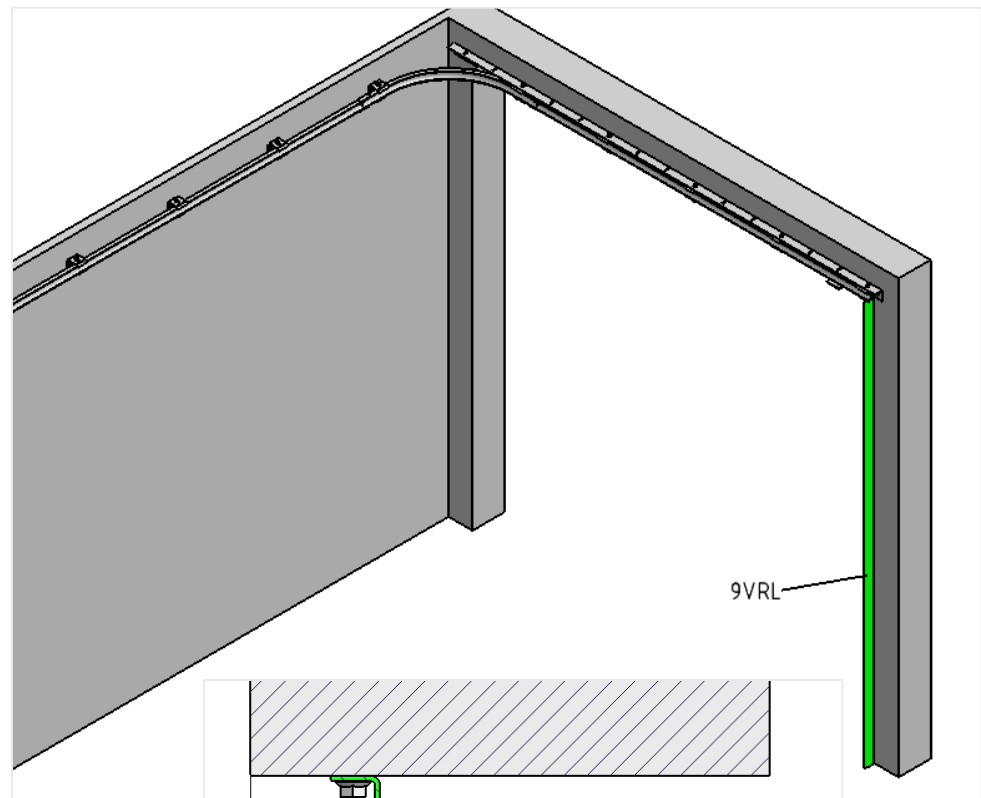
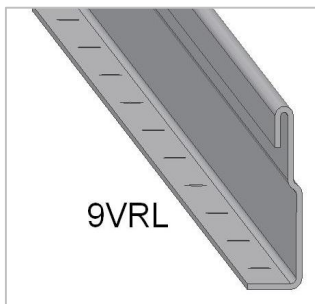


INSTALLATION OF UPPER TRACK IN SUSPENSION

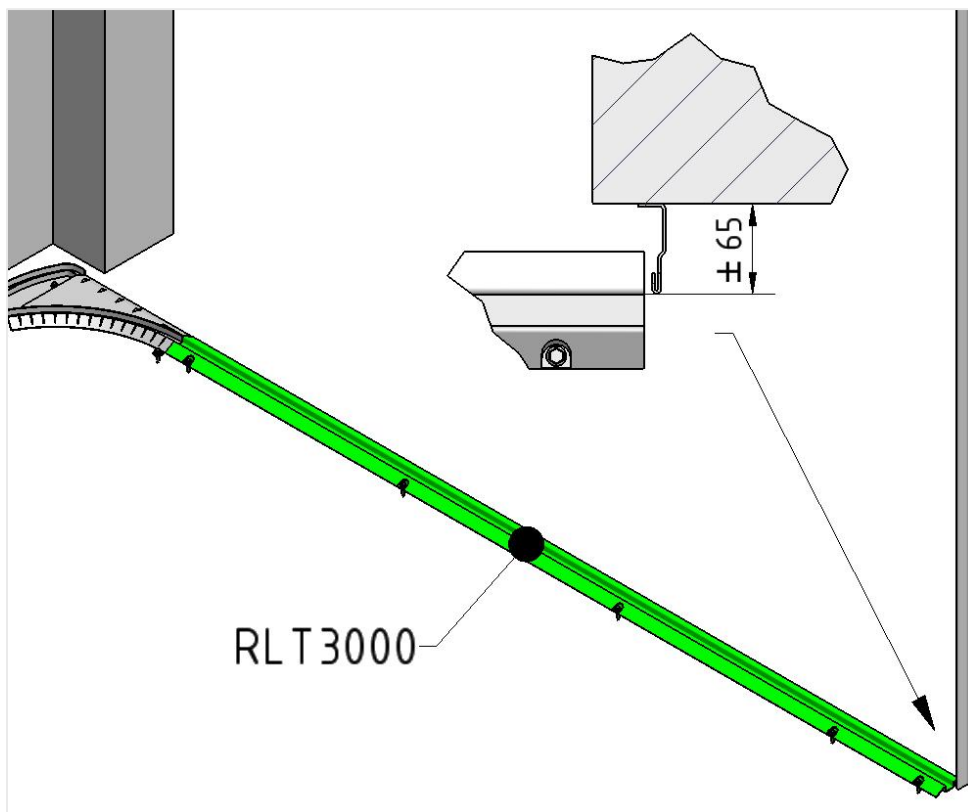
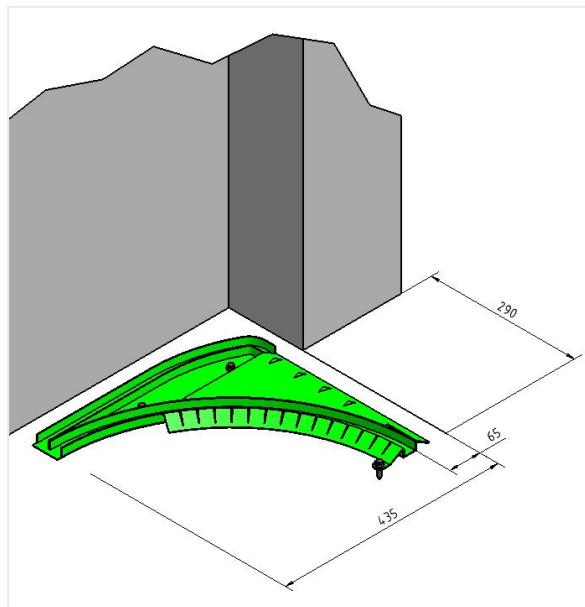
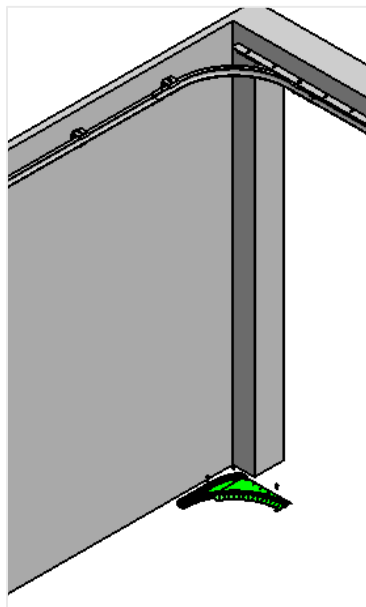
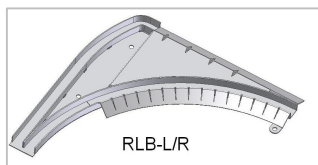


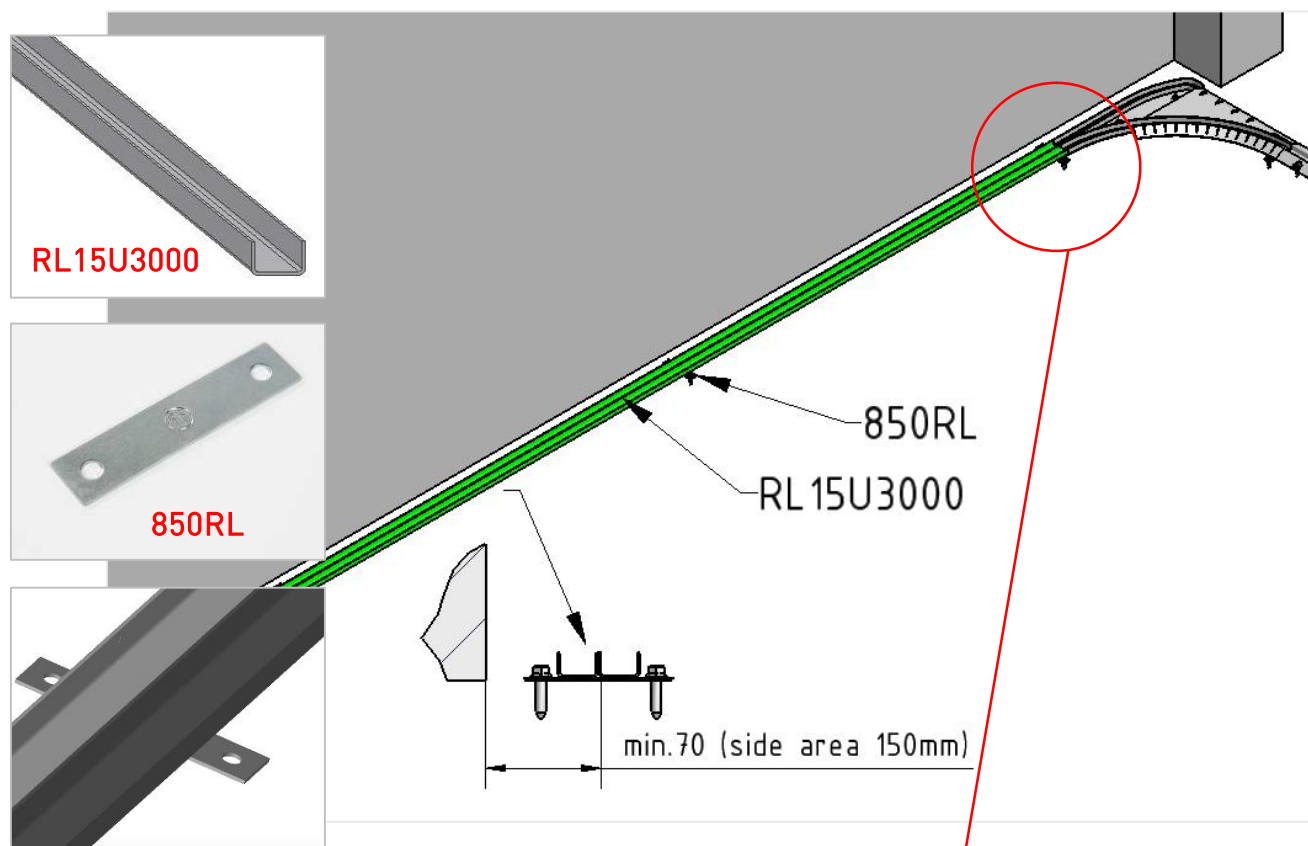


INSTALLATION VERTICAL ANGLE 9VRL

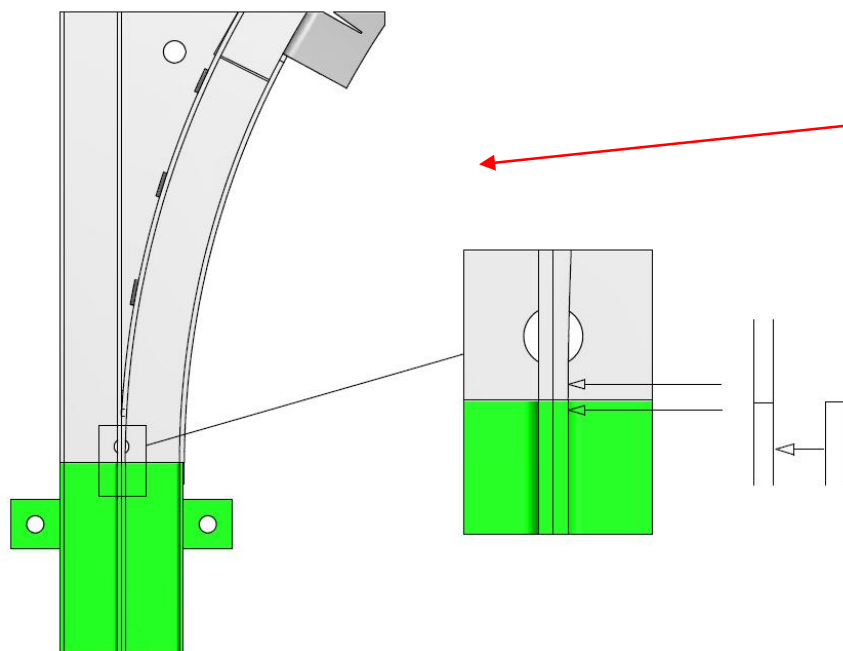


INSTALLATION BOTTOM GUIDE TRACK





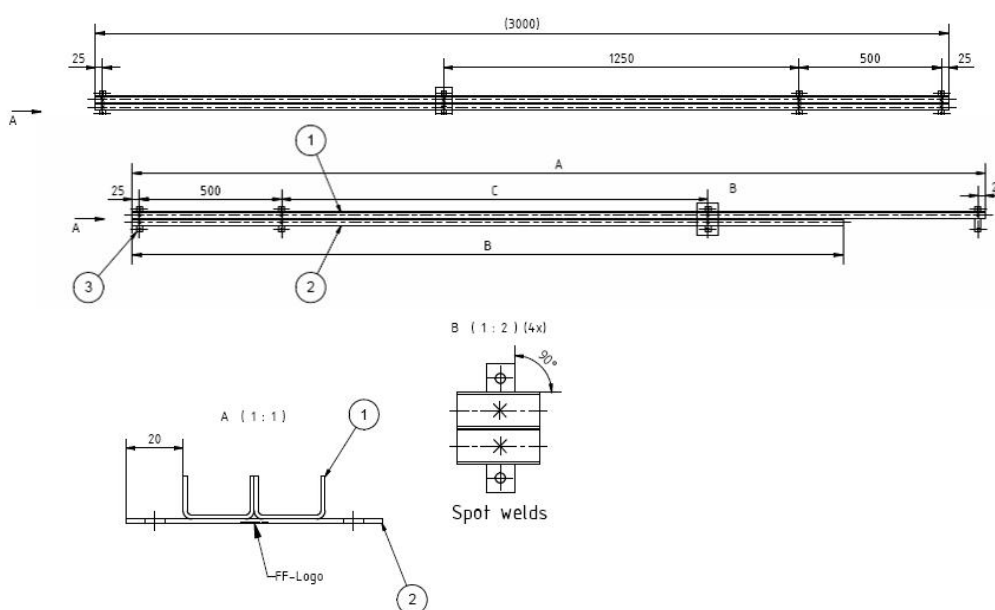
CONNECTION BOTTOM CURVE WITH U-PROFILES



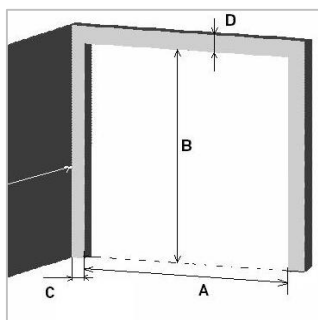
RL15U3000 and 850RL AVAILABLE AS PRE-ASSEMBLED KIT

The combination RL15U3000 and 850RL as described above is also available from stock as a pre-assembled kit. This kit exists out of 2 RL15U profiles spot welded with 850RL. By buying a pre-assembled kit, installation of the profiles simplifies and saves time. The article numbers and max. door width for the kits are:

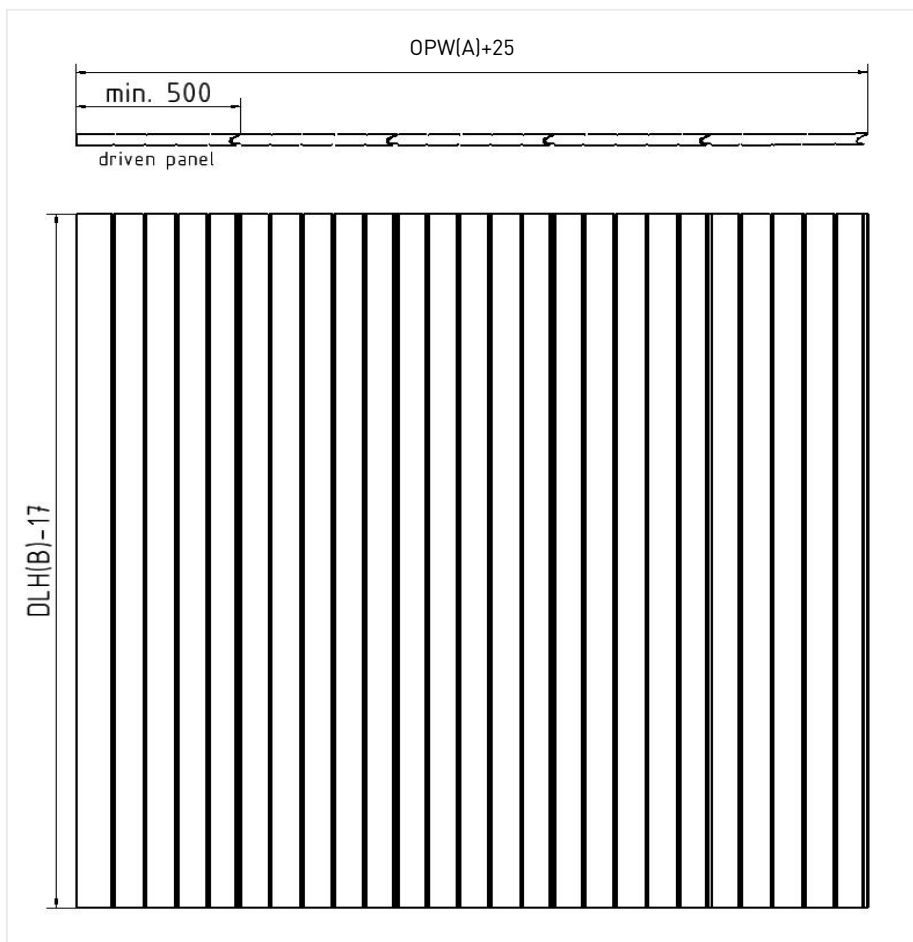
Article number	Description	A	B	C
RLB30	Bottom rail	n.a.	n.a.	n.a.
RLB30-25	Bottom rail	3000	2500	1500
RLB25-20	Bottom rail	2500	2000	1000
RLB20-15	Bottom rail	2000	1500	500



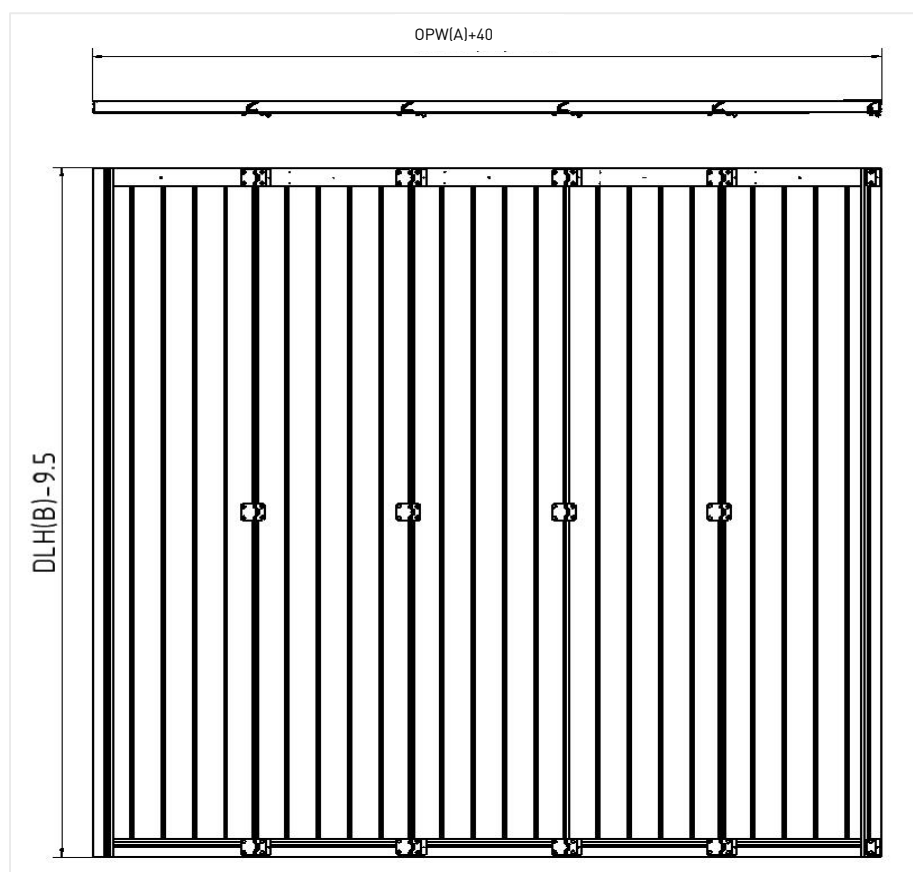
PANEL ASSEMBLY (CUTTING PANELS TO SIZE)



panels only



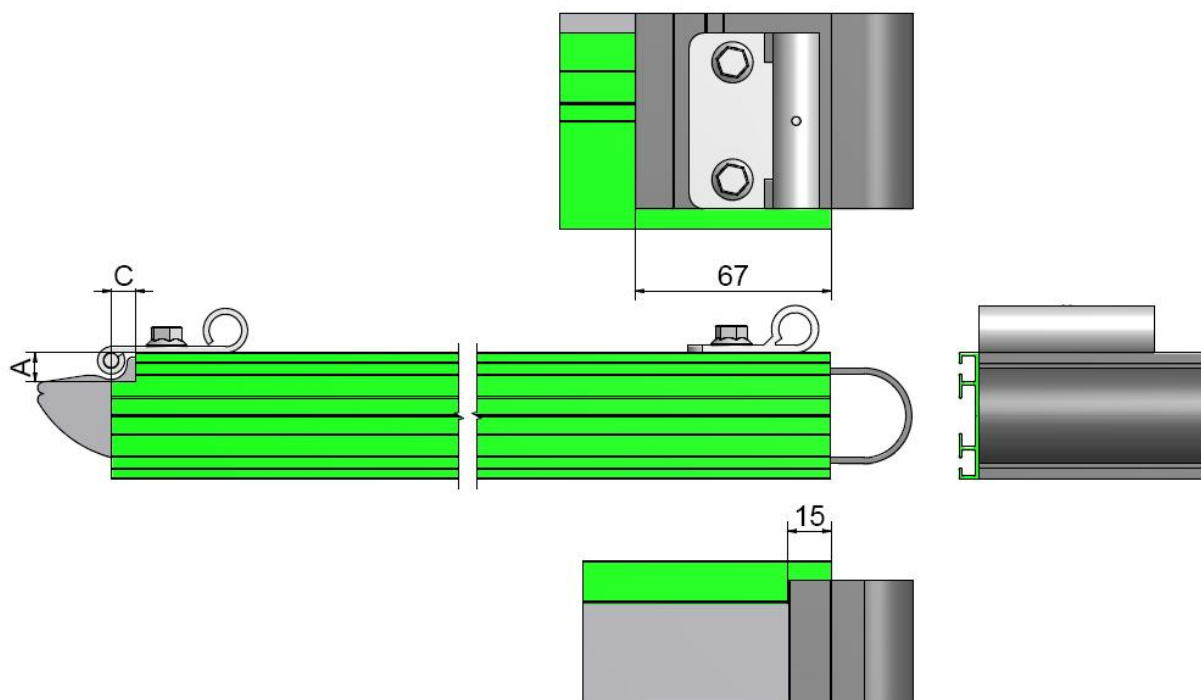
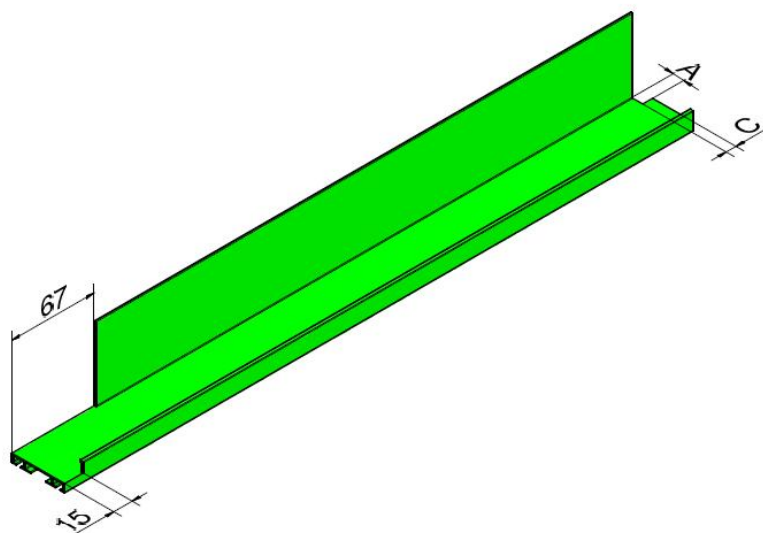
with end caps and bottom hardware



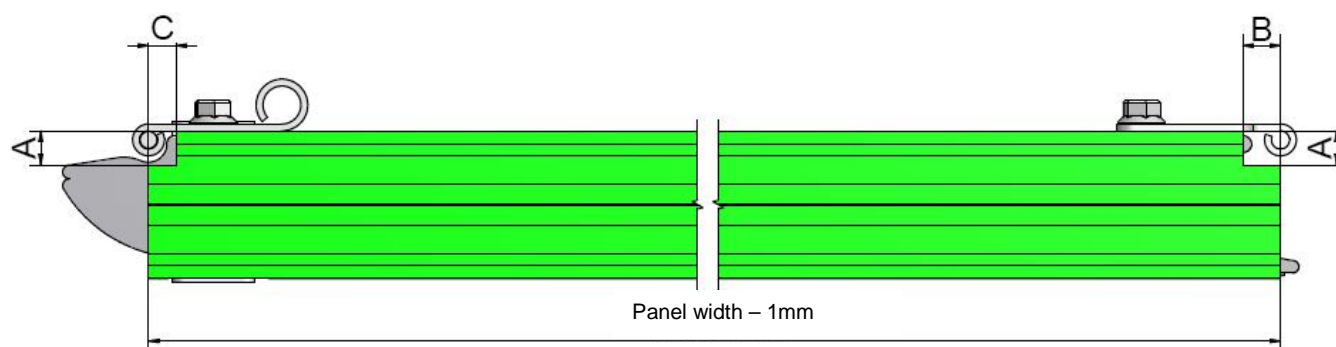
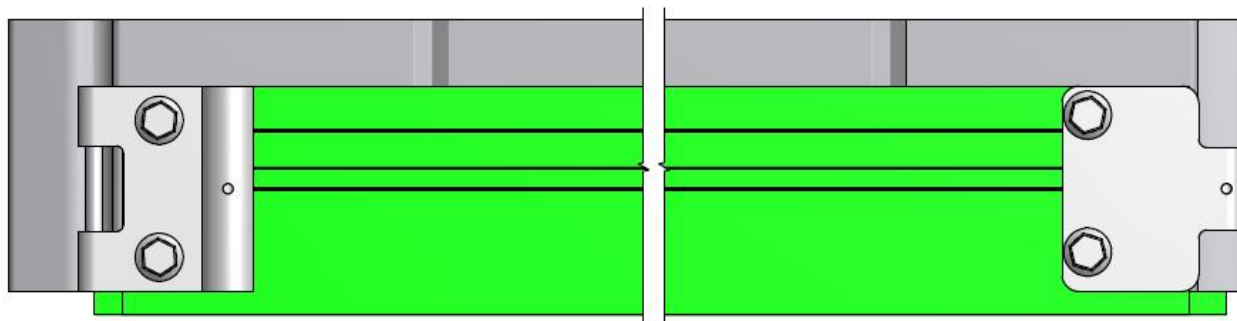
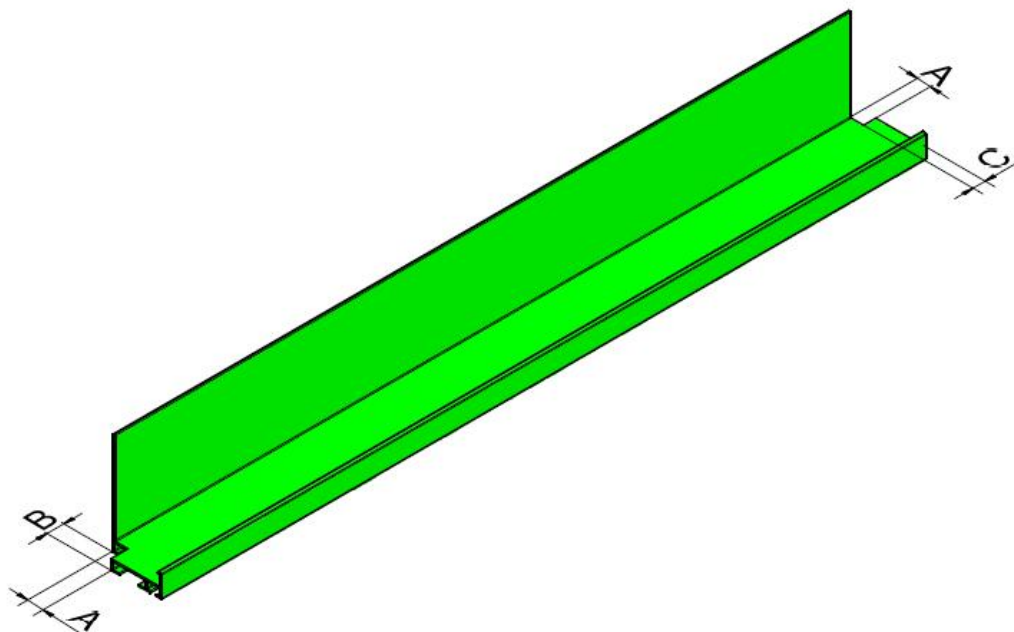
PANEL ASSEMBLY: CUTTING TO SIZE OF 1030L-S6090

Type of panel	A	B	C
Bremet	10	9	9
Kingspan	10	11	7
Tescedo	10	10	11
Thyssen	13	11	11

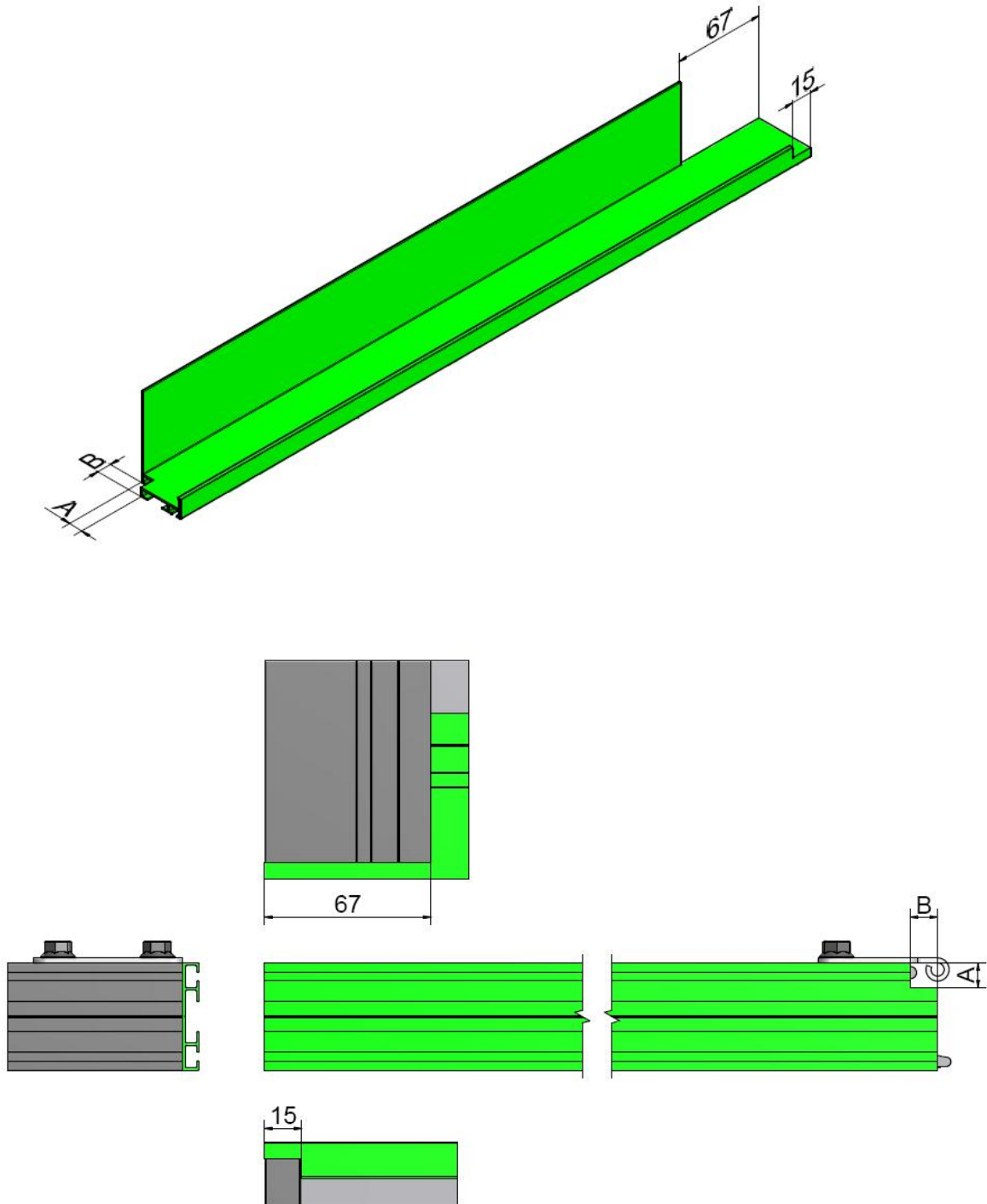
1st panel

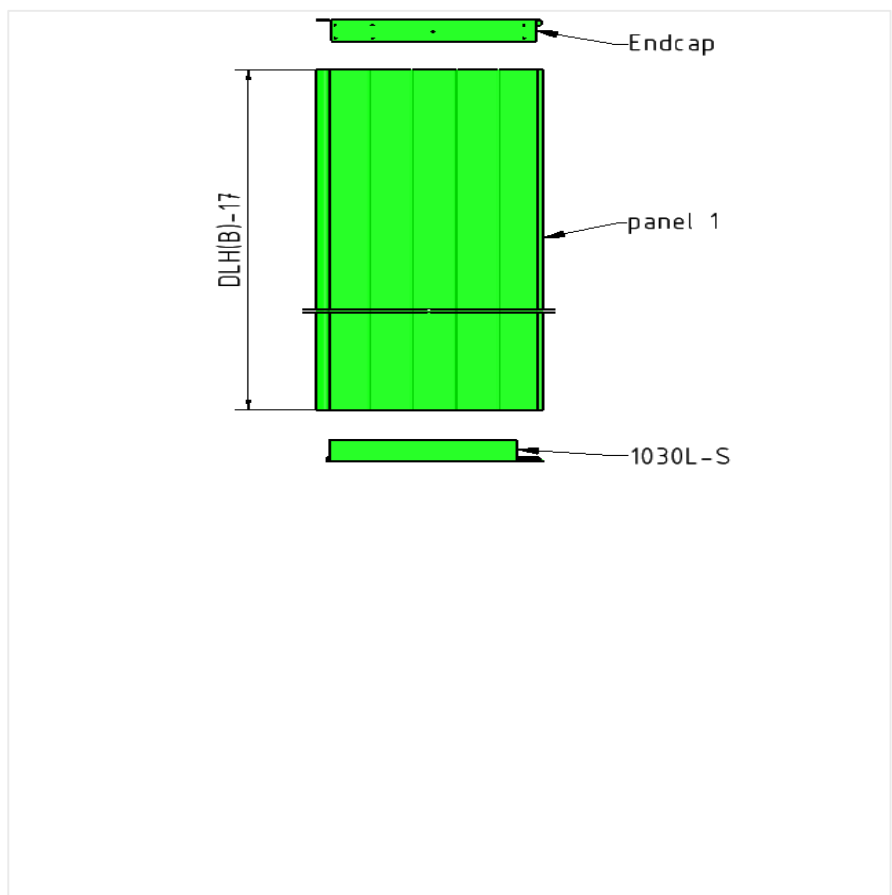


Intermediate panels



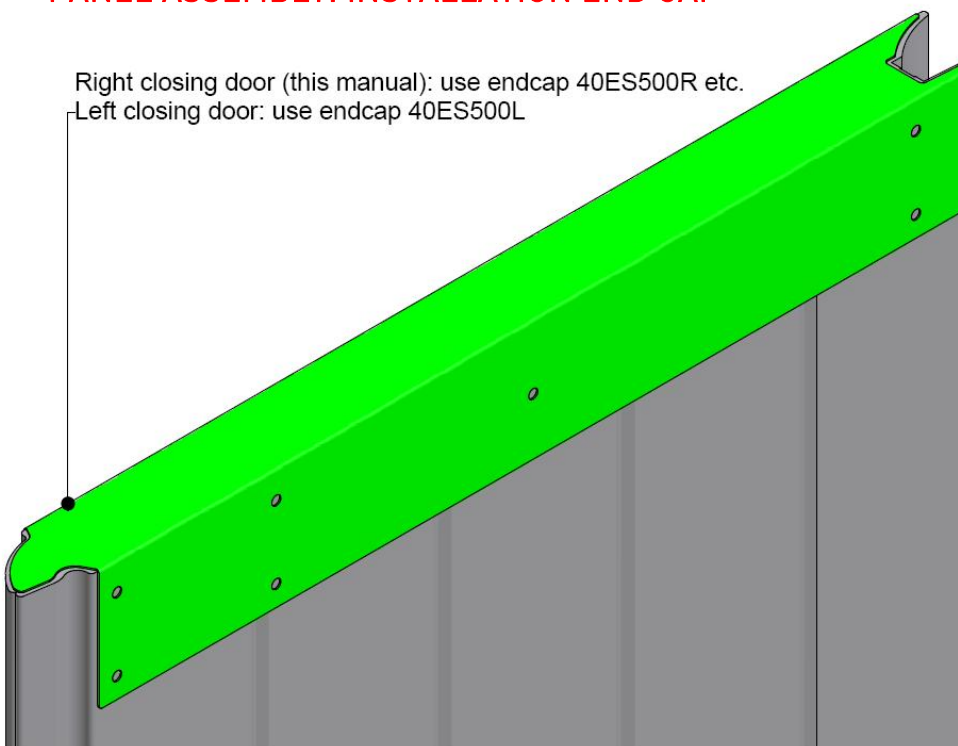
Last panel



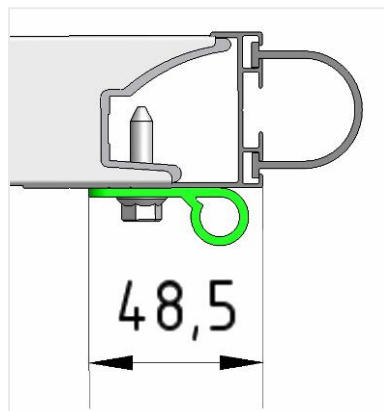


PANEL ASSEMBLY: INSTALLATION END CAP

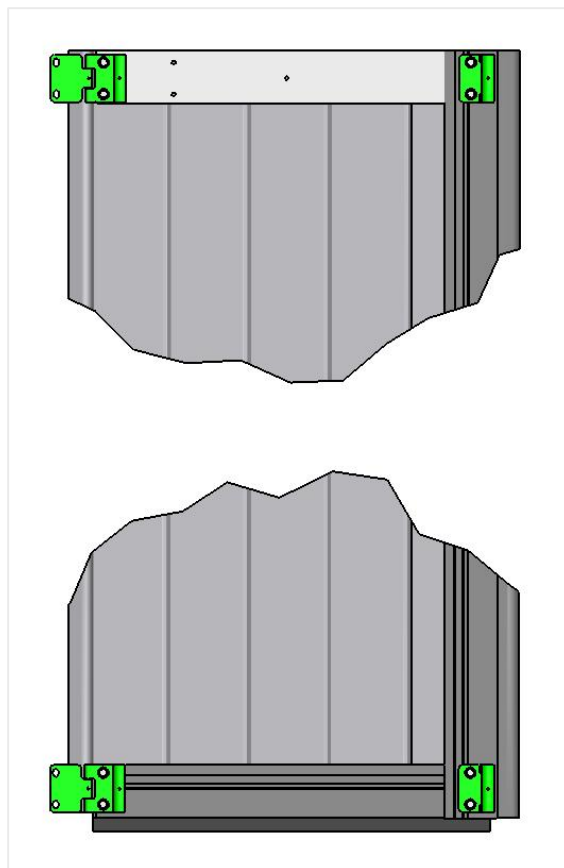
Right closing door (this manual): use endcap 40ES500R etc.
 Left closing door: use endcap 40ES500L



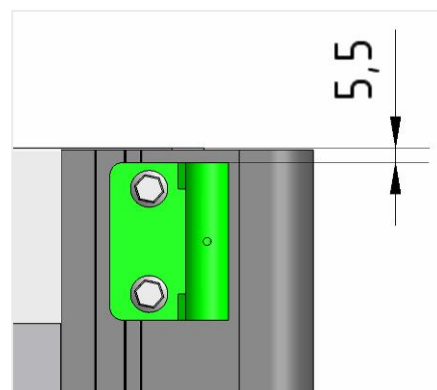
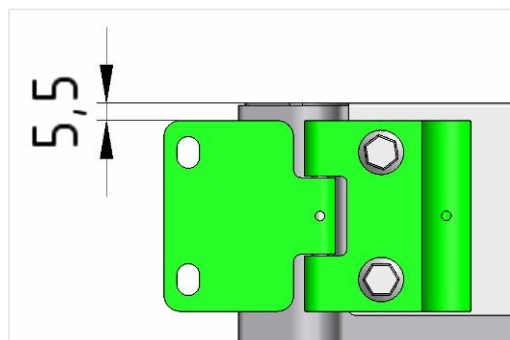
PANEL ASSEMBLY (STARTING WITH 1st PANEL)



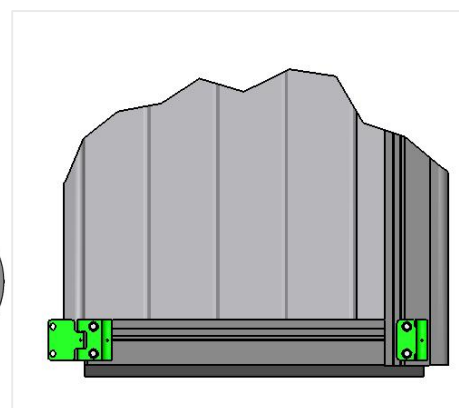
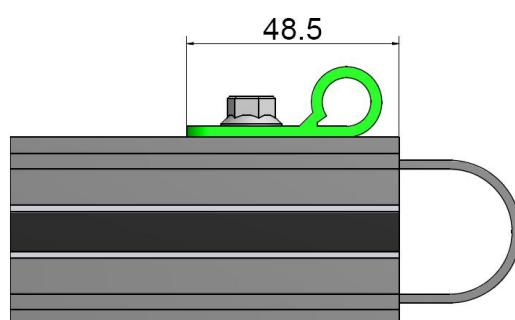
(top view ?)



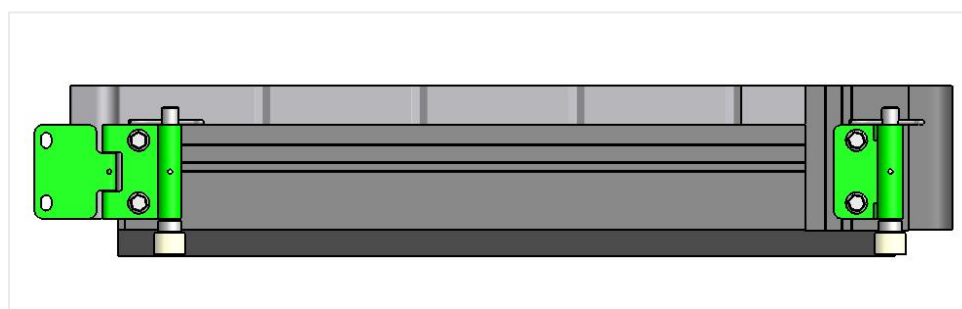
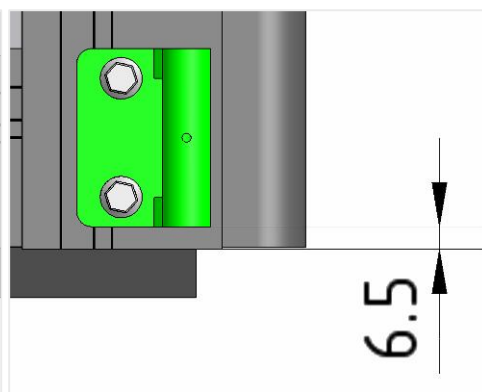
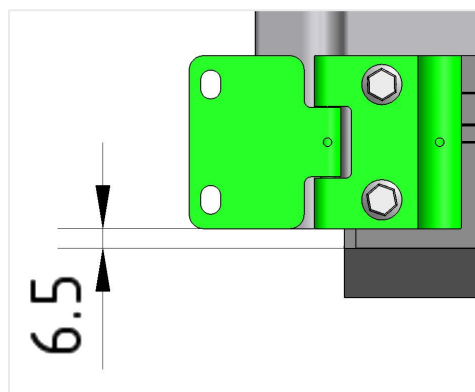
(top of panel ?)



(bottom of panel ?)



(bottom view ?)



1038INS2550



1087B



1030L-S6090

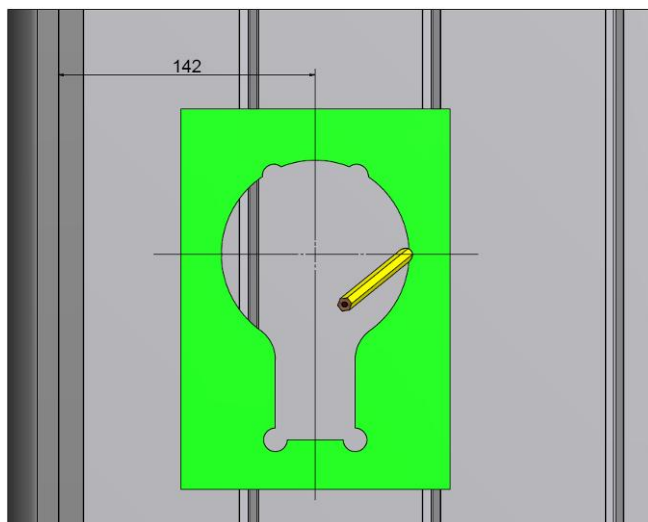


1037

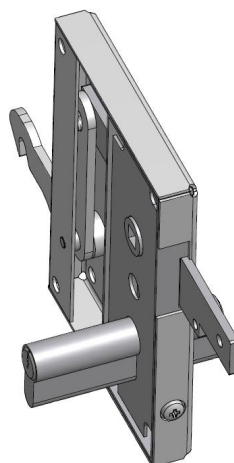
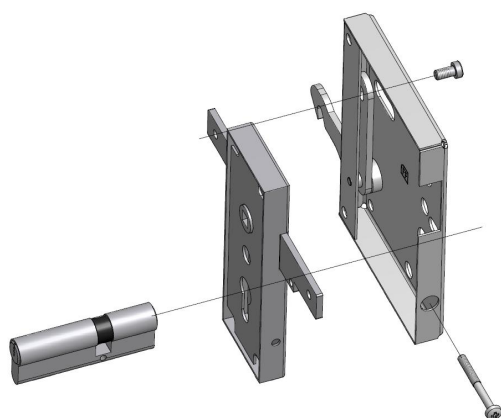


RL580

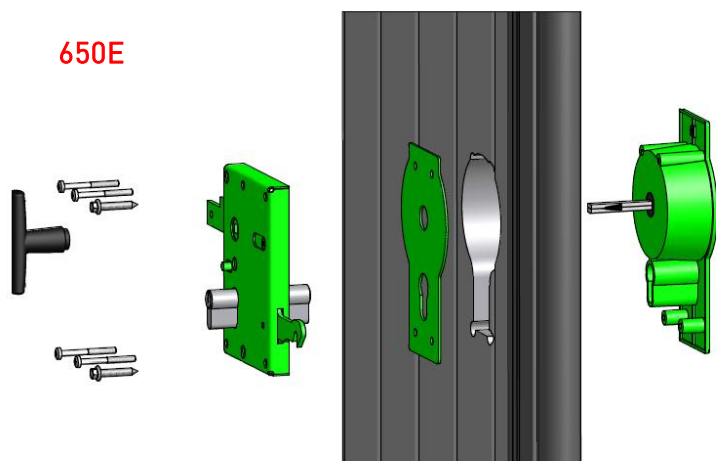
PANEL ASSEMBLY: INSTALLATION LOCK 650-40RAL/ RBL and 650E



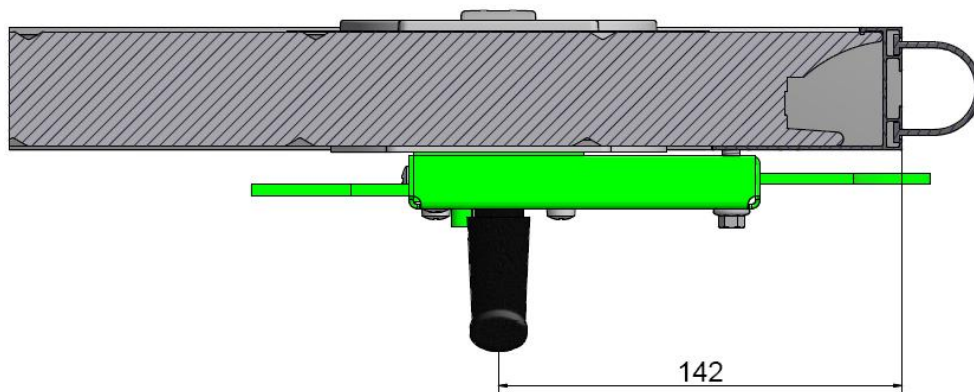
ASSEMBLY 650E WITH 650CLM



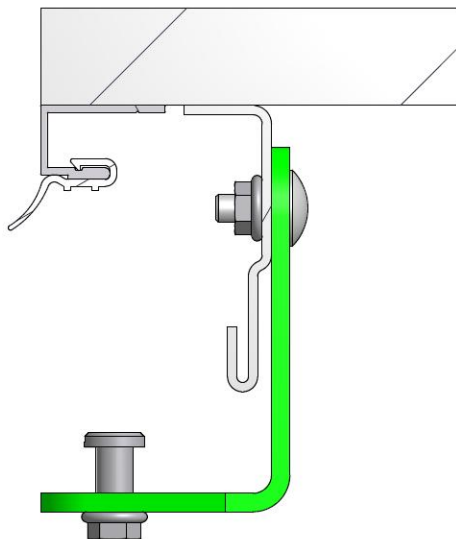
EXPLANATION INSTALLATION LOCK IN PANEL



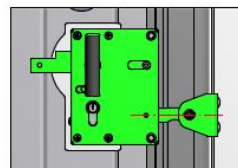
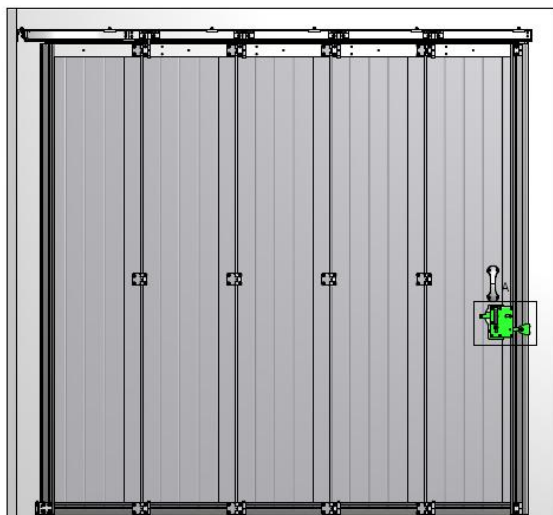
POSITION LOCK ON PANEL (top view)



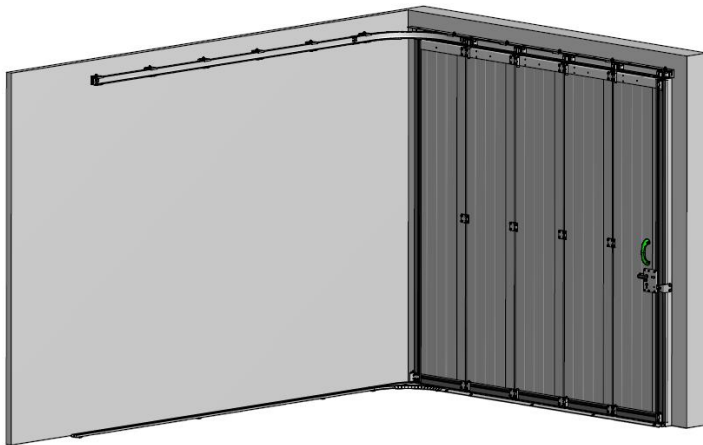
LOCK BRACKET FIXED TO 9VRL



LOCK COMPLETE INSTALLED ON RESL



GRIP INSTALLED ON DOOR RESL



DOOR INSTALLATION



1068MN



2050-8



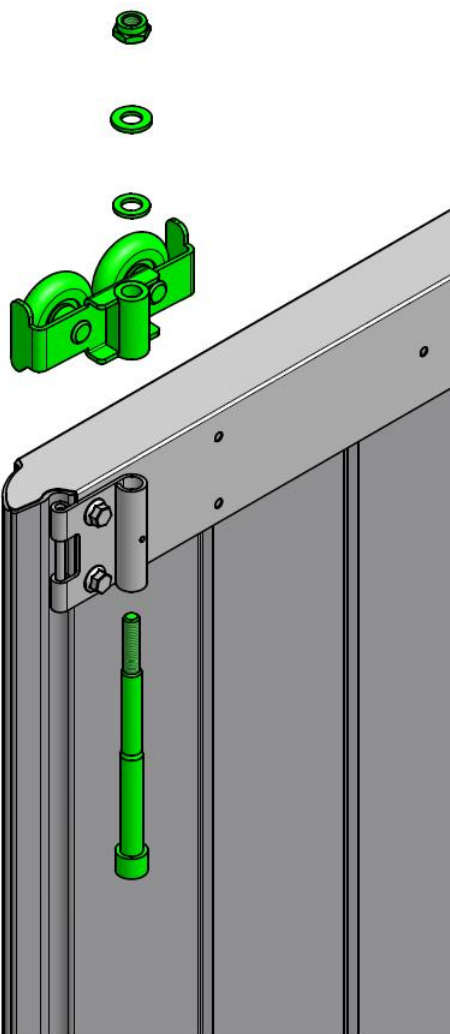
2052-8

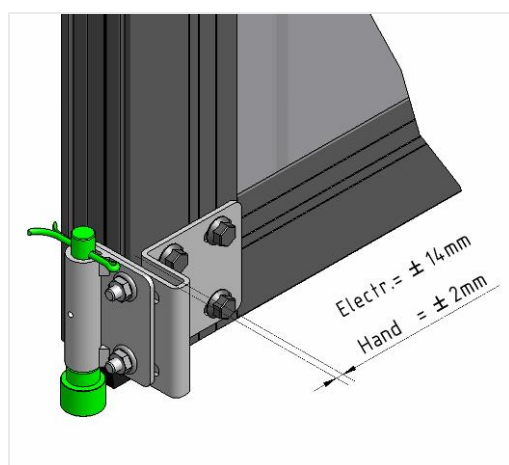
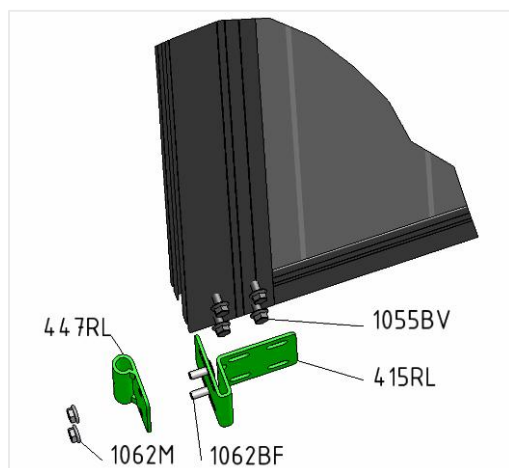


RL592

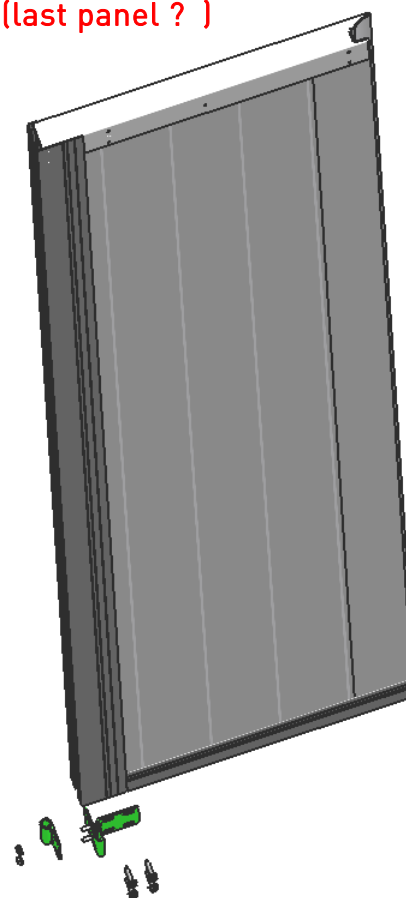


1088BN

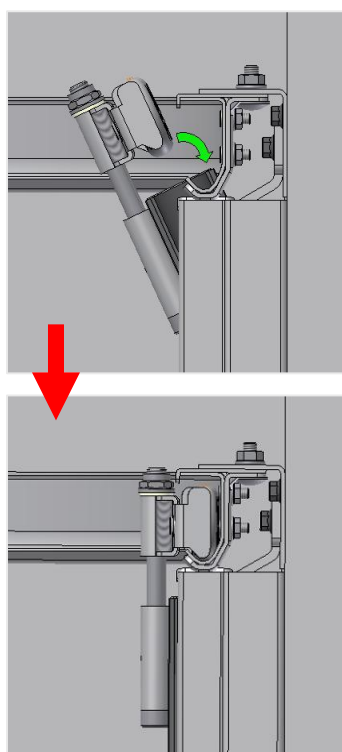


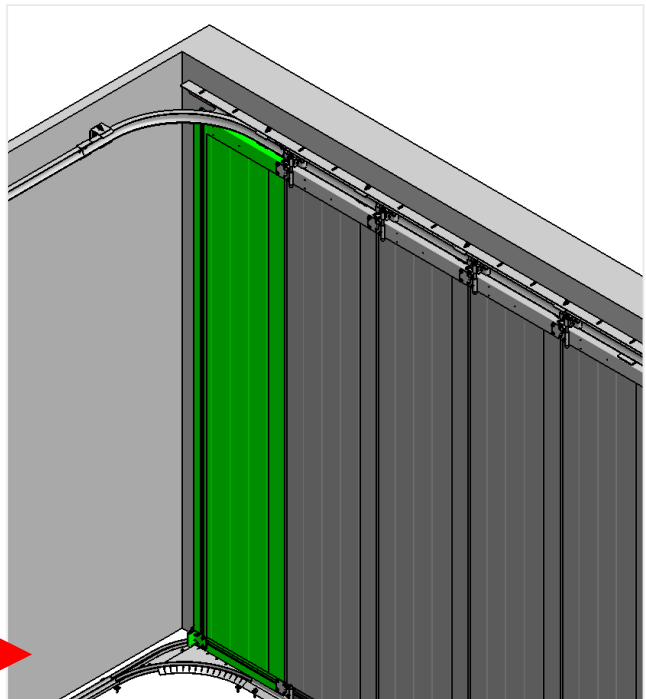
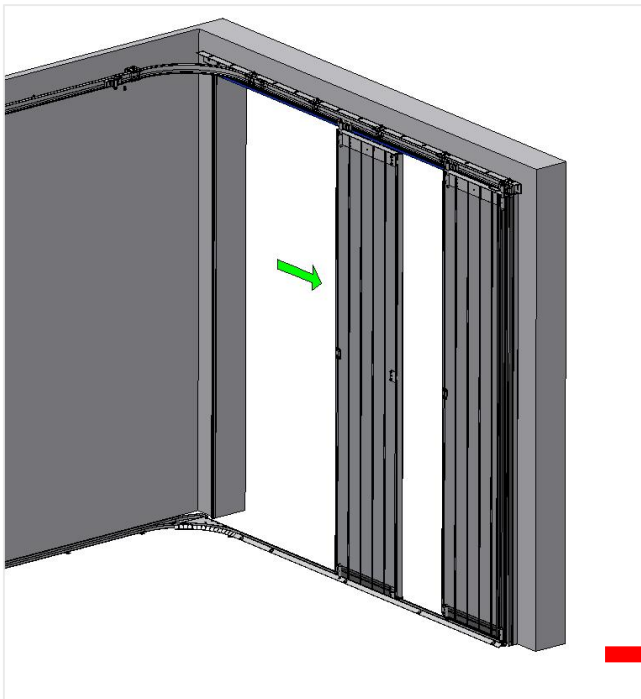
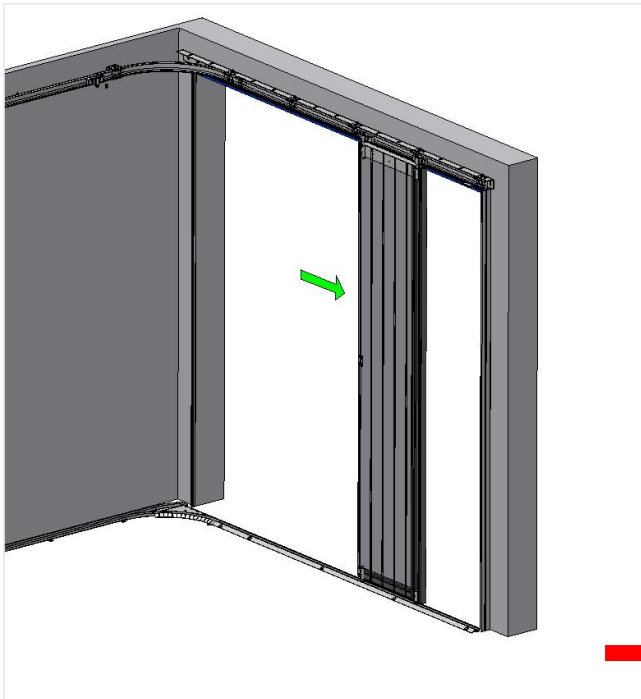


(last panel ?)

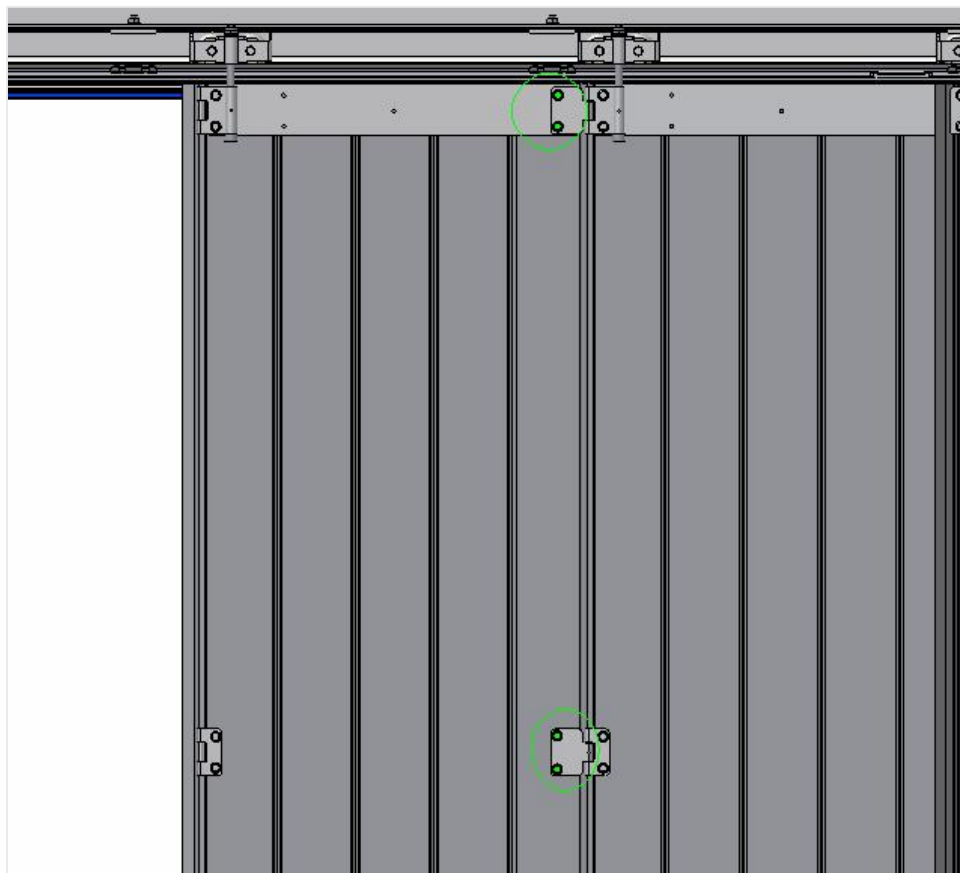


INSTALLING THE PANELS (SECTIONS) IN THE TRACK SYSTEM

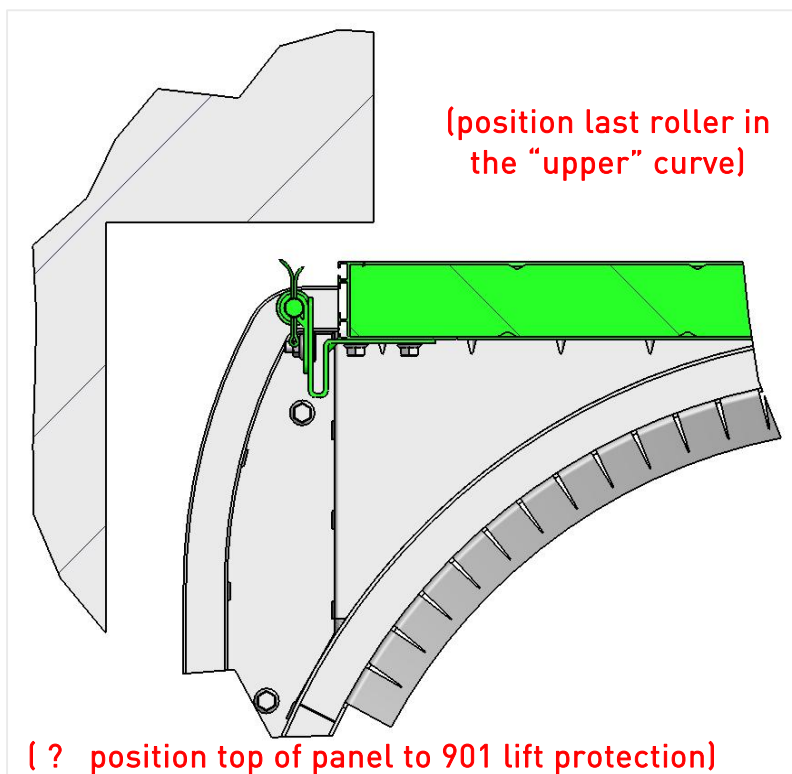
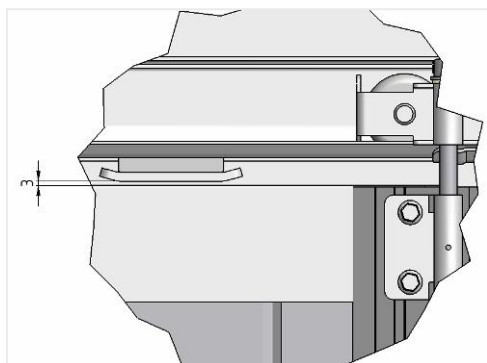
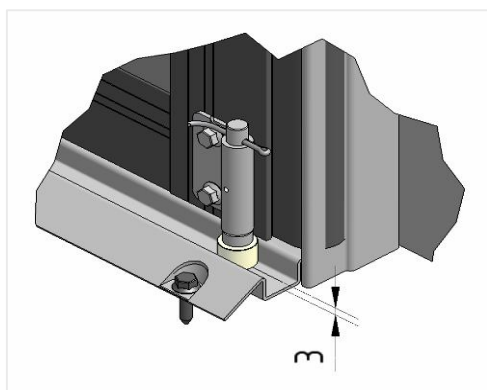




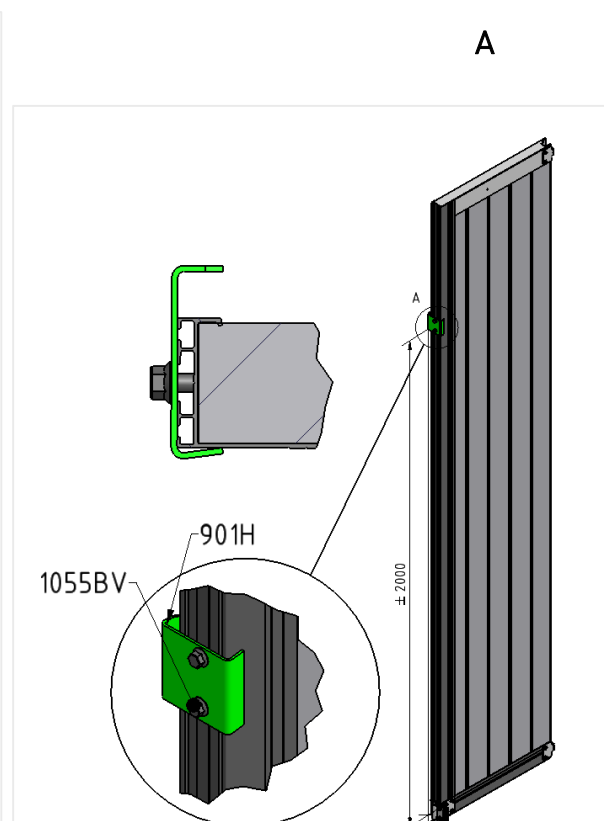
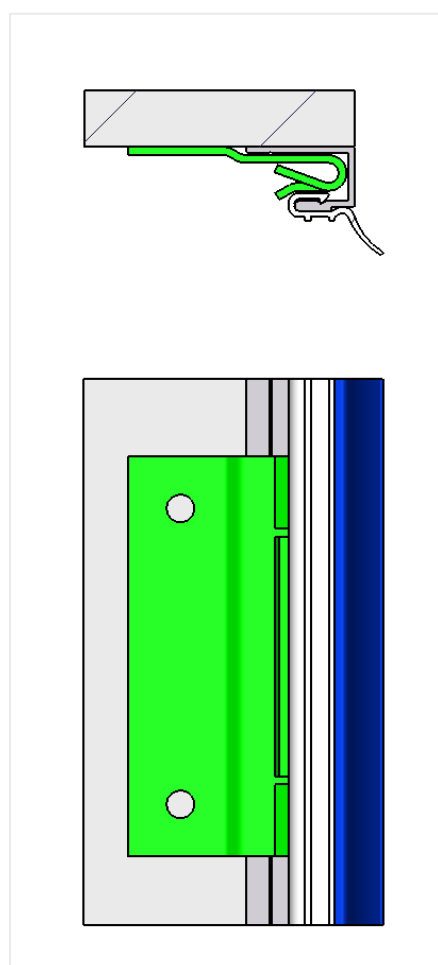
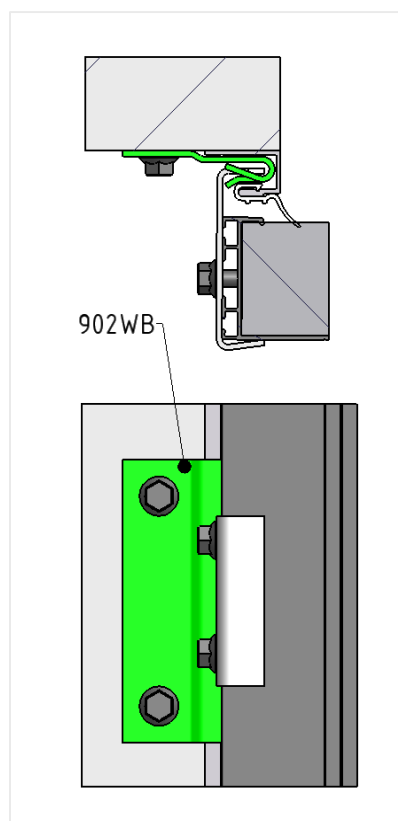
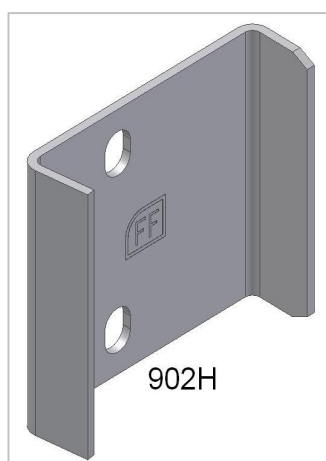
FIXATION LATERAL HINGES AND INSTALLATION INTERMEDIATE HINGES



ADJUSTING PANEL POSITIONING

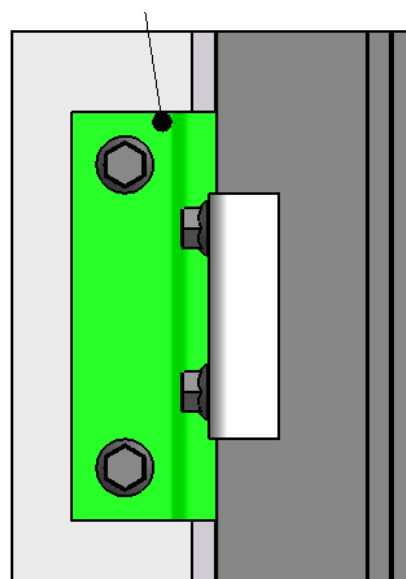


INSTALLING 902H, 902WB ANTI-LIFT BRACKETS

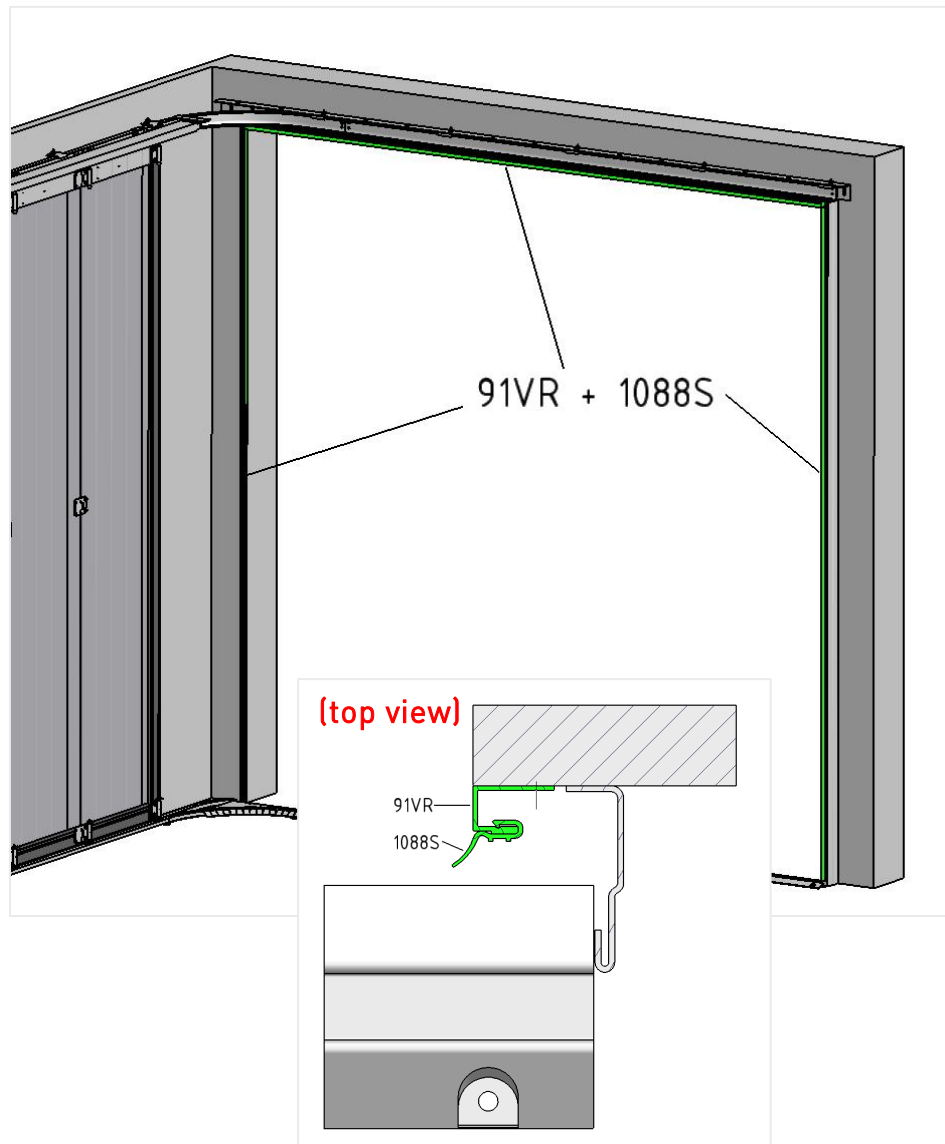
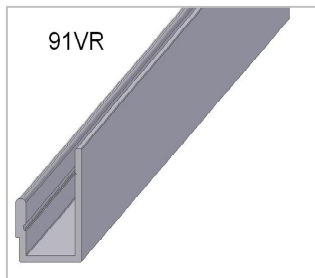


B

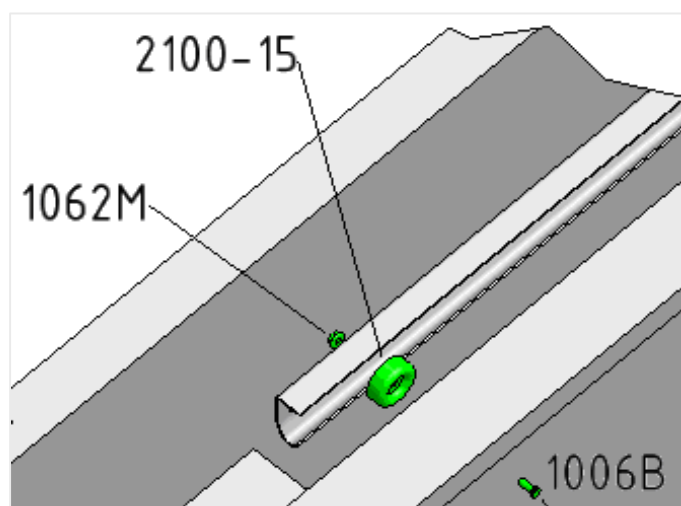
C



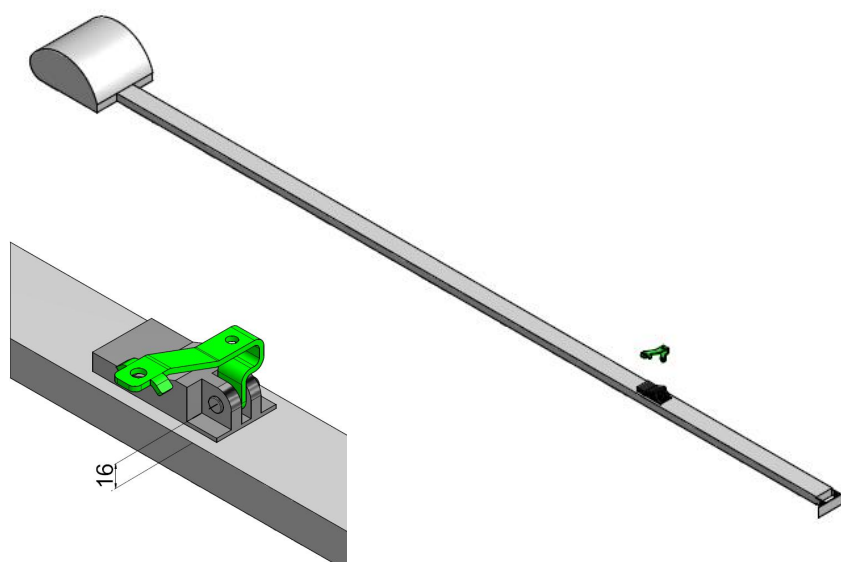
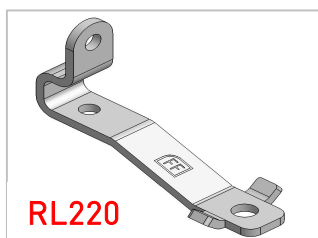
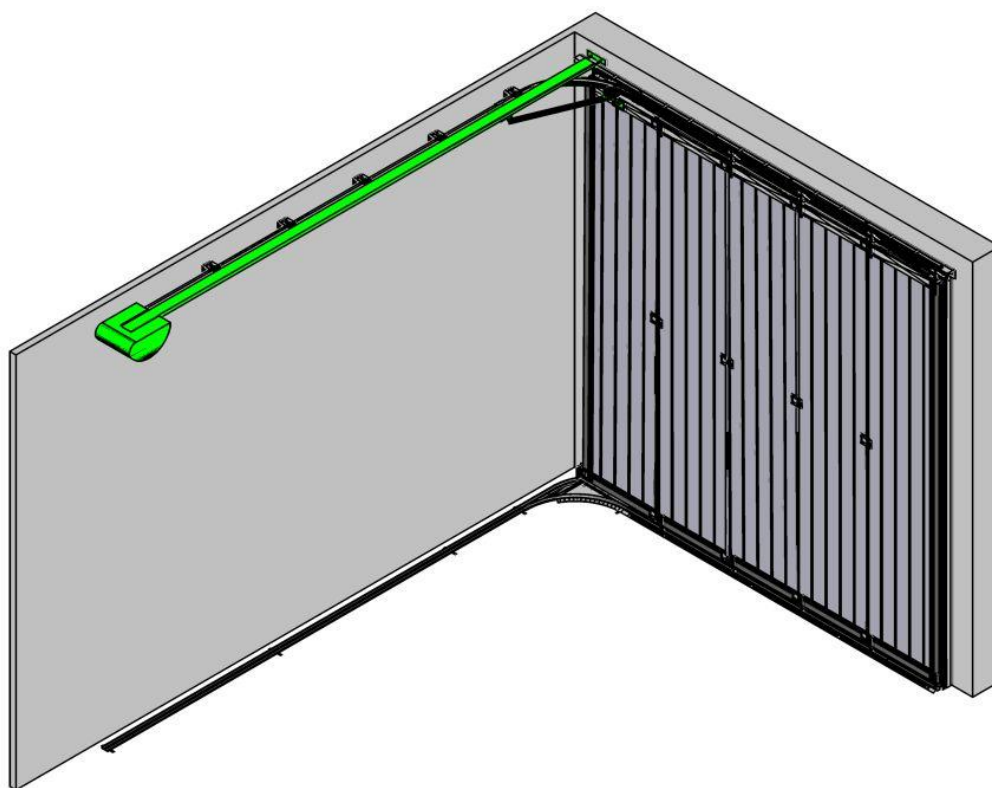
INSTALLATION SIDE AND TOP SEALS

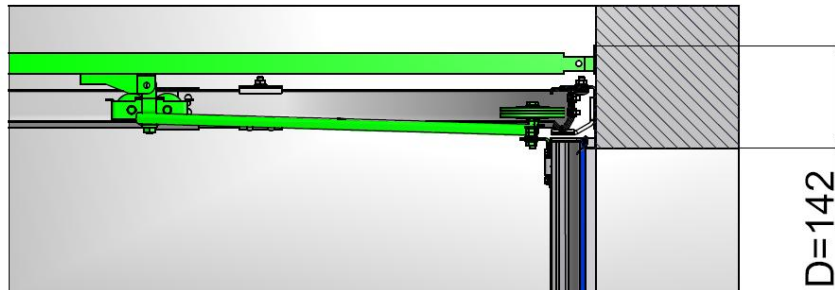


INSTALLING END STOP IN SIDE TRACK

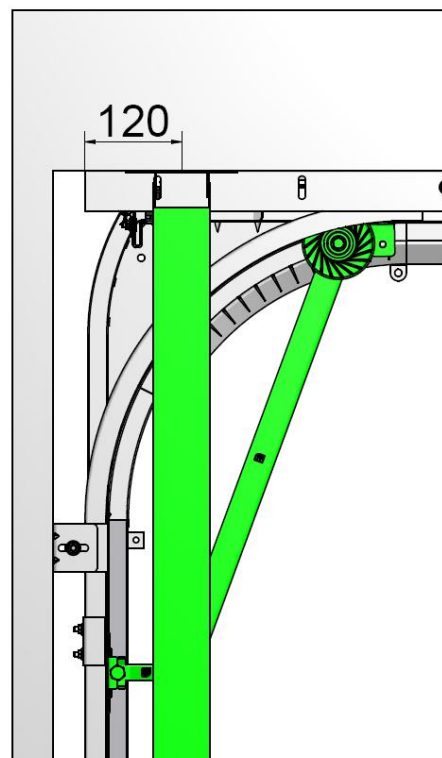


E-OPERATION INSTALLATION: OPTION 1 LIFTMASTER

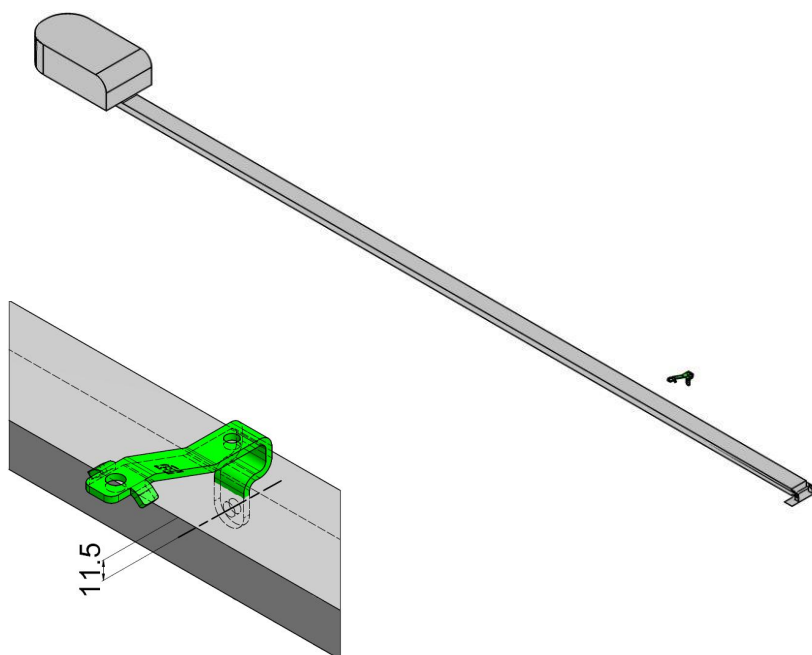
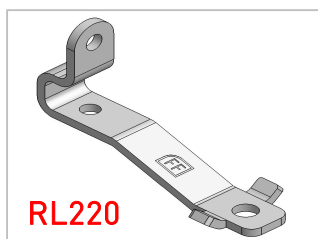
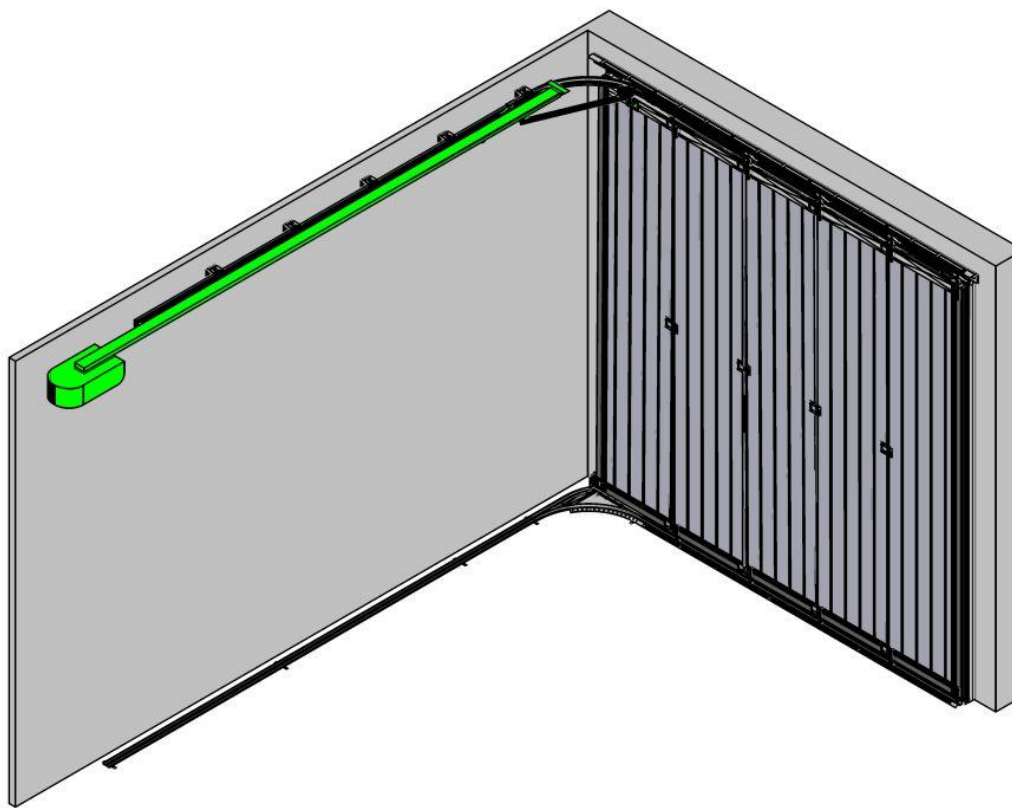


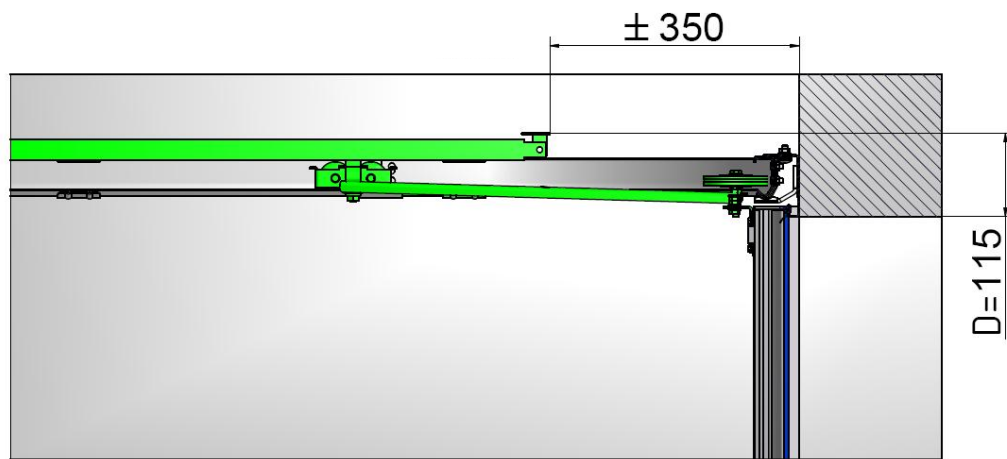


(days opening →)

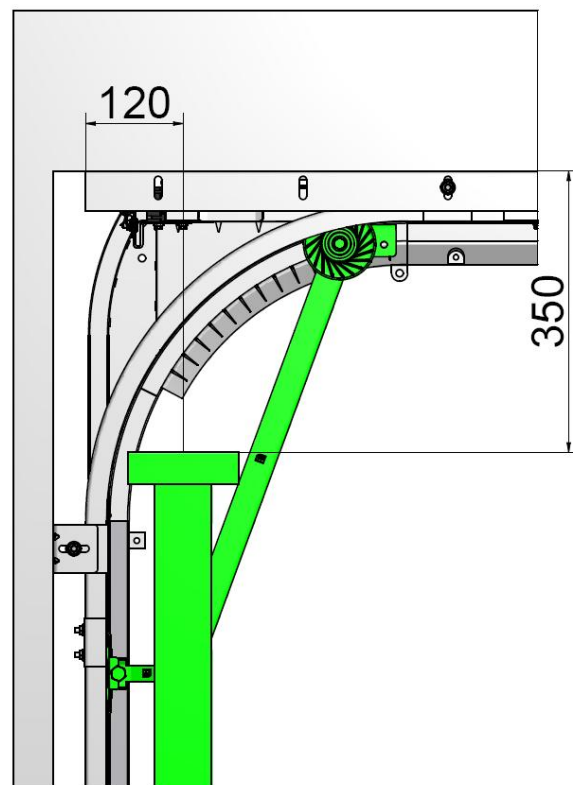


E-OPERATION INSTALLATION: OPTION 2 OTHER





(days opening →)



(operator bracket system)

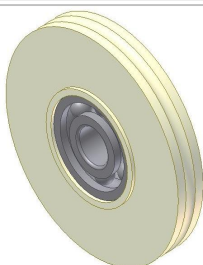
1057B60



557BUS8



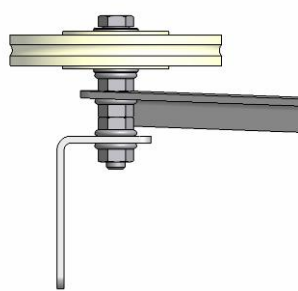
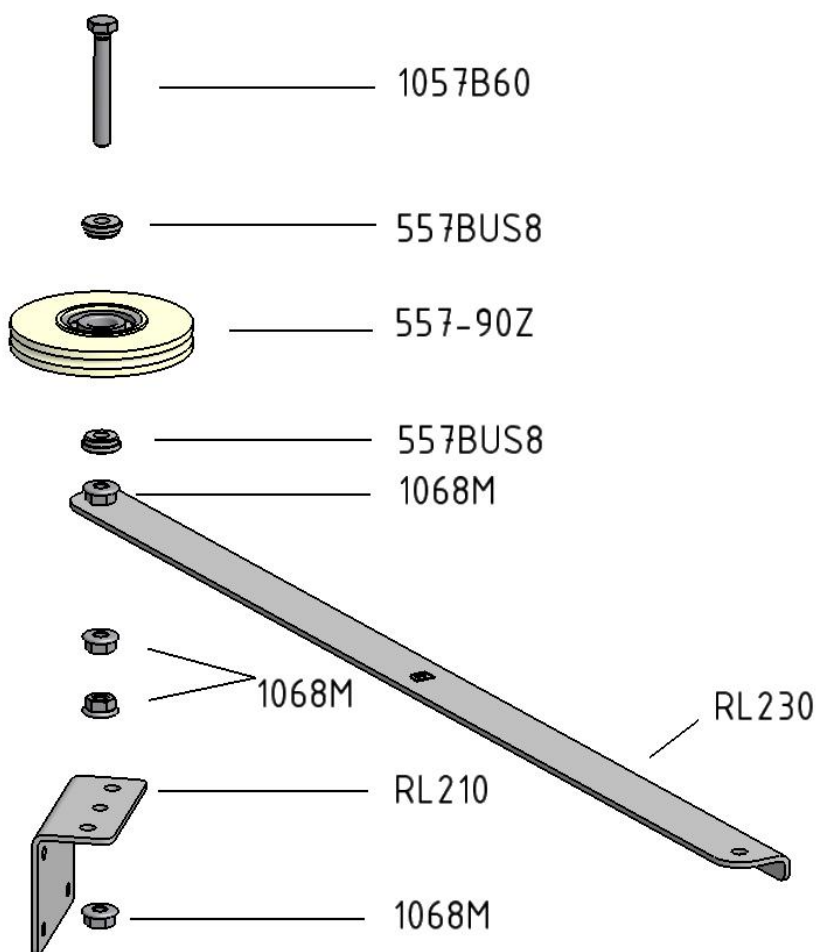
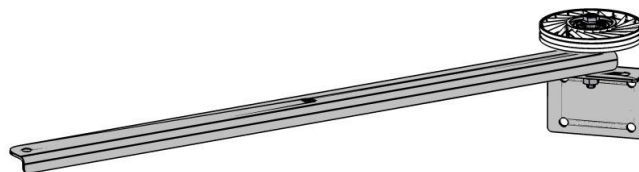
557-90Z

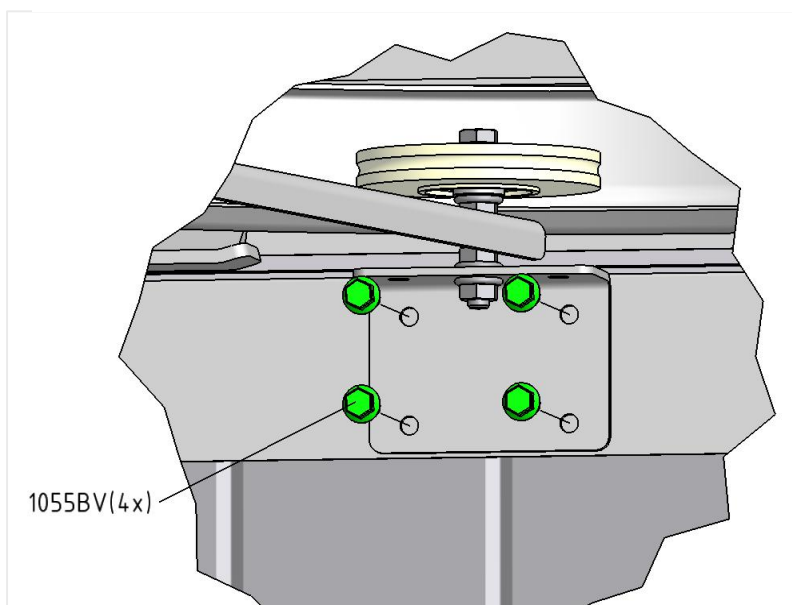
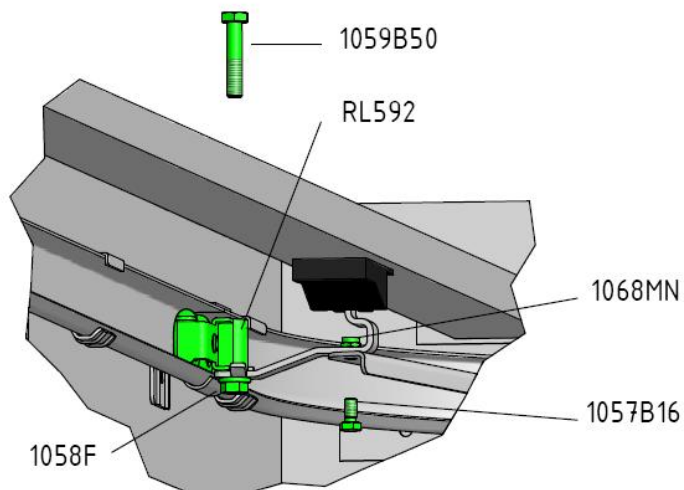
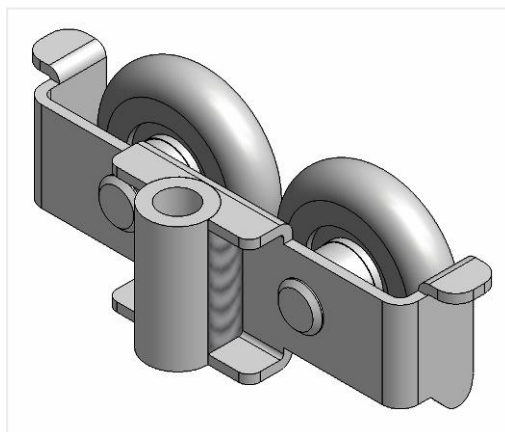
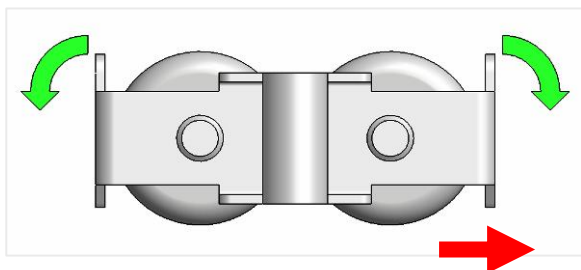


RL230

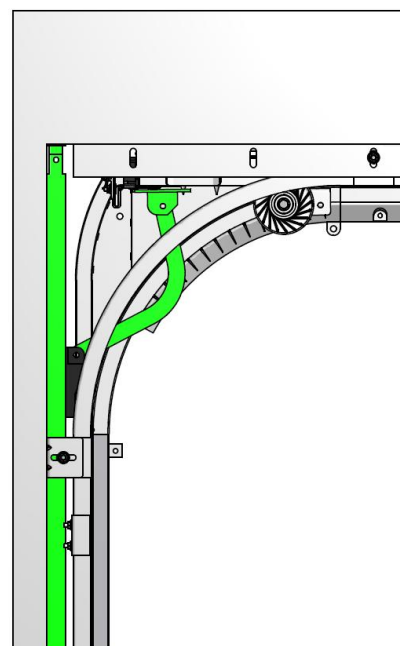
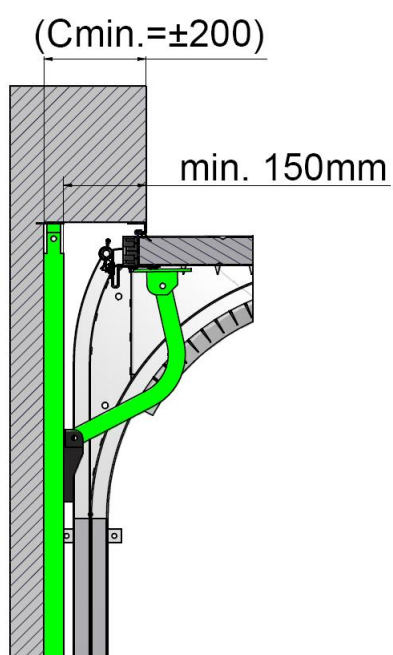
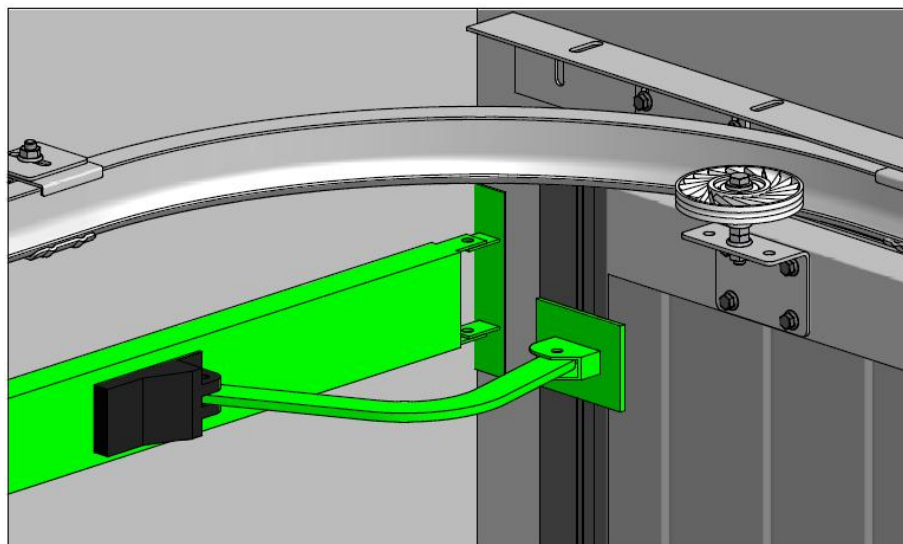
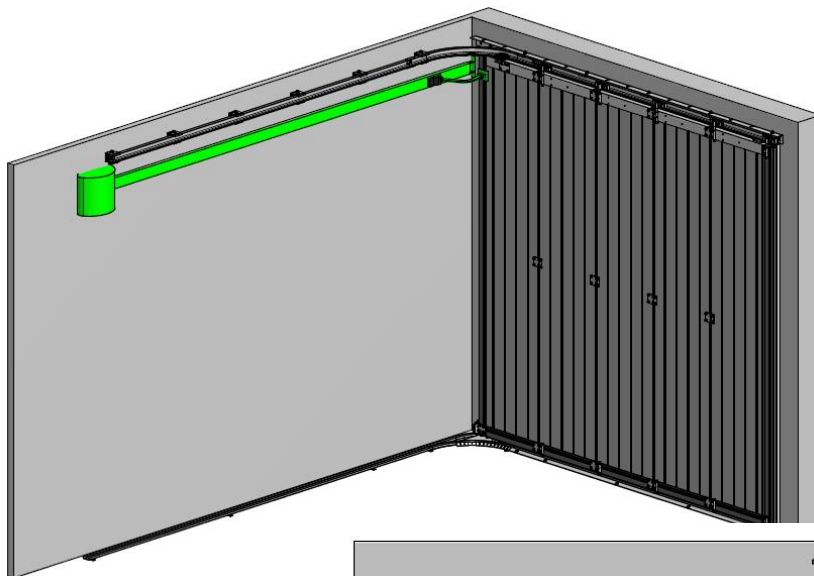


RL210





E-OPERATION INSTALLATION: ALTERNATIVE OPTION (LIFTMASTER, NOT CE!)



ATTENTION WITH E-OPERATION

When you have selected an electrical operator drive (LIFTMASTER LM60K/R or other), then this should be assembled in conformity with the handbook supplied with this operator and above displayed instructions. You should clearly follow the instructions for electrical operation in this handbook.

In order to maintain the closing peak force of the door within the CE-standards the attachment point (97014) of the drawbar should be fixed at the proper position. Ask your supplier for the correct position.!



NB! The person installing the door must check thoroughly if the combination between this door and the selected operator is safe to use (ITTR-approval report). Keep in mind the max. peak force that is allowed when closing the door. People could get hurt if the adjustment of the operator software, or the installation of the operator or the selected operator on this door, are not checked correctly!!

FINISHING THE DOOR

Install any additional accessories that you have ordered separately such as: Handgrip, lock, etc. See separate instructions in product packaging.



NB! A lock may not be fitted to an electrically driven door.



NB! A manually operated door should always be equipped with a hand grip, installed at a safe location on the door.

- Oil all hinges and all bearing rollers with one drop of oil (WD40).
- Let some drops of oil go into the curve of the track. This lubricates the connection between track and nylon roller, which allows a smooth operation of the door.
- The roller shafts are being greased during installation.
- Place your CE identification plate on the door (mandated!!) together with any warning labels required.
- Hand over necessary documents to the end-user:
 - User manual
 - Dismantling instructions (included in this manual)
 - Maintenance instructions (included in the user manual)
 - Service log book
 - Declaration of conformity Ila declaring the door is according to EN-13241-1.
- Visit www.flexiforce.com for more information on your obligations towards handing over a safe-to-use door.

DISMANTLING THE RESL DOOR

1. Take the power supply of the operator
2. Dismantle the operator arm and brackets
3. Remove the operator and draw-bar
4. Remove the seals and alu profiles from the lintel
5. Remove the 902 anti-lift brackets
6. Disconnect the panels by loosening the hinges
7. Lift panels out of the threshold and turn them piece by piece out of the upper track
8. Remove the upper and bottom track system
9. Make sure that you remove all the parts and panels in an environment kindly way. Check with your local authorities where and how you can leave this as garbage.



FOR ANY DETAILS ON THESE DISMANTLING INSTRUCTIONS, WE REFER TO THE INSTALLATION CHAPTERS OF THIS MANUAL WHERE DRAWINGS AND DETAILS ARE DISPLAYED.

MAINTENANCE AND REPLACEMENT OF PARTS RESIDENTIAL DOORS

An side sliding sectional garage door should be maintained and checked regularly to ensure safe operation and use. This is described in the EN-norms.

GENERAL:

- 1 Replacement of broken or weared components should always be done by qualified door mechanics.
- 2 When checking the door, always disconnect the electrical main power supply. Make sure that it is blocked against re-engaging without you knowing it.

REGULAR MAINTENANCE:

After installation:

- | | |
|--|----------|
| 1. Grease running part of the tracks | MECHANIC |
| 2. Grease the bearings of the rollers | MECHANIC |
| 3. Grease the shafts of the rollers | MECHANIC |
| 4. Grease the hinge pins | MECHANIC |
| 5. Grease the lock (if present) | MECHANIC |
| 6. Protect the panels with carwax | USER |
| 7. Grease the rubbers slightly with vasaline | USER |

After 3 months:

- | | |
|---|----------|
| 1. Complete inspection visually | MECHANIC |
| 2. Check height adjustment and closing and adjust if needed | MECHANIC |
| 3. Grease all the above mentioned points if needed | MECHANIC |

Every 6 months (or after every 750 cycles):

- | | |
|--|------|
| 1. Check side seals on damage or wear and tear | USER |
| 2. Check top seal on damage or wear and tear | USER |
| 3. Check bottom brush on damage or wear and tear | USER |
| 4. Check seals in panels | USER |
| 5. Grease all above mentioned points | USER |
| 6. Clean the panels | USER |
| 7. Remove dirt and waste from the door or its surroundings | USER |
| 8. Keep track of bottom rollers clean (threshold, corner and siderail) | USER |

Every 12 months (or after every 1500 cycles):

- | | |
|---|----------|
| 1. Check the rollers on wear and free moving space | MECHANIC |
| 2. Check the hinges on functioning and tightening of screws | MECHANIC |
| 3. Check the panels on damage, wear and rust | MECHANIC |
| 4. Check and test the safety edge system with operator | MECHANIC |
| 5. Check the manual operation of the door | MECHANIC |
| 6. Check side seals on damage or wear and tear | MECHANIC |
| 7. Check top seal on damage or wear and tear | MECHANIC |
| 8. Check bottom brush on damage or wear and tear | MECHANIC |
| 9. Check seals in panels | MECHANIC |
| 10. Grease all the above mentioned points | MECHANIC |
| 11. Check bolts of coupling to operator system | MECHANIC |
| 12. Check the connections of the track system | MECHANIC |
| 13. Check the suspension of the door to the lintel, side wall and ceiling | MECHANIC |

Use for greasing : PTFE or SAE20 or WD40

Use for cleaning : Soft soap with water. Do not use aggressive soap or cloth.